



XC / XT Series

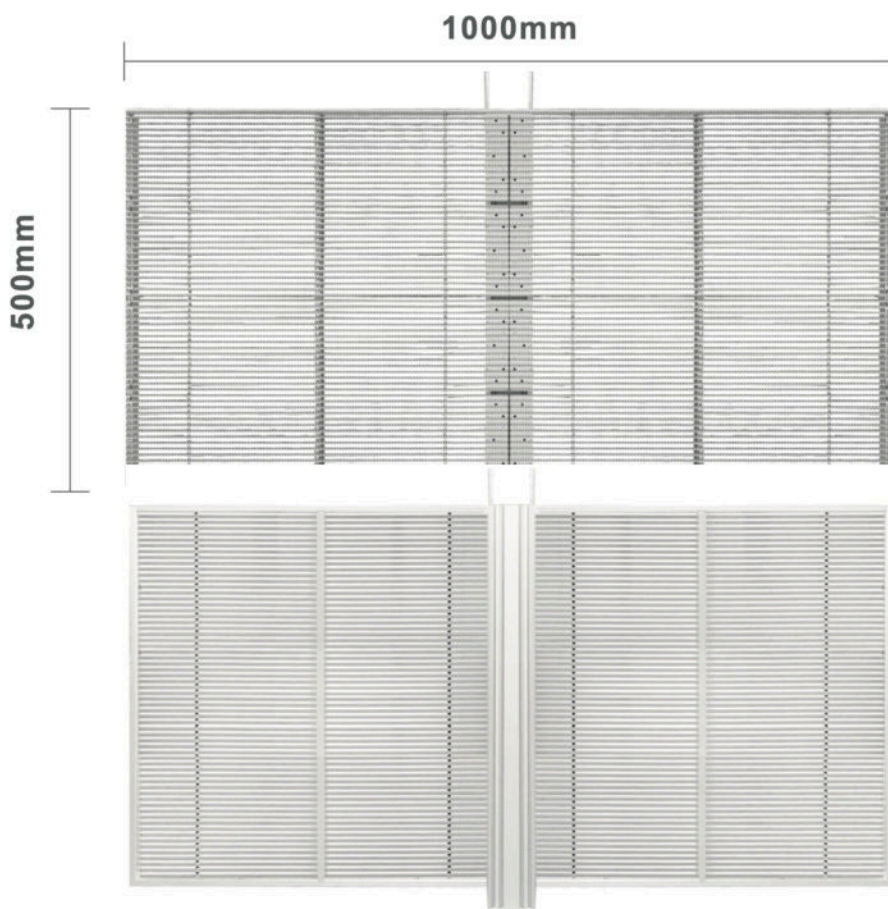
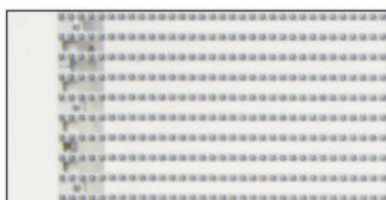
(Vision. More Than Sight)

Shenzhen XIV Amaterasu Innovation Technology Co., Ltd.

Add: DGX industry park, Jiangzao village, Jiangzao town, zhuji city, Zhejiang province China

Tel: 0575-87688555 Fax: 0575-87688116

LAMP SMD1921



FEATURES

1. Over 85% transparency ratio, sunlight can go through glass curtain wall without hinder.
2. Cabinet made of aluminum alloy, good-look, lightweight and faster heat dissipation.
3. High transparency PC cover mask to improve protection and impact resistance.
4. Slim design, light weight.
5. Fan-free, no noise.

85%
Over 85% Transparency Ratio

1. 85%の透明度誇り、太陽光にも負けない明るさ
2. キャビネットはアルミ製。最新のキャビネットデザインを採用
3. 高い透過率と輝度の高さでハイクオリティーな映像表現が可能
4. スリムなデザインと軽量化されたキャビネット
5. ファンレスにより騒音がない

PC Import
PC Cover High Transparency

Applications



Curtain Wall Building



Store Window



Exhibition



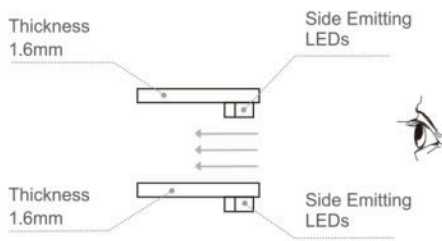
Commercial Advertising



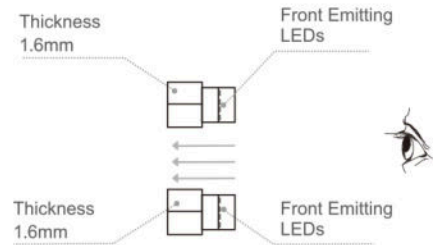
Creative Show

Front Emitting & Side Emitting

- DGX can offer two solutions on transparent LED screen. One is in Side Emitting, another is Front Emitting. Compared to Front Emitting, Side Emitting is more advantageous in transparency.



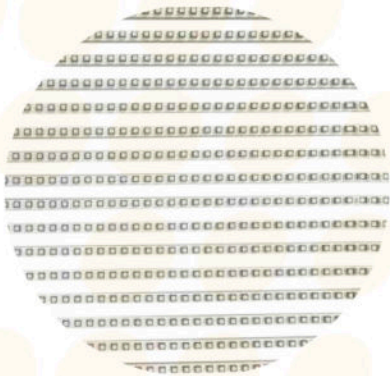
▲ Side Emitting Diagram



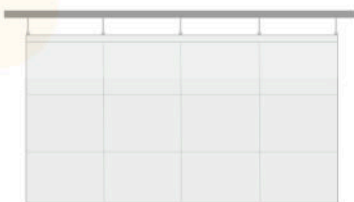
▲ Front Emitting Diagram

Front Emitting & Side Emitting

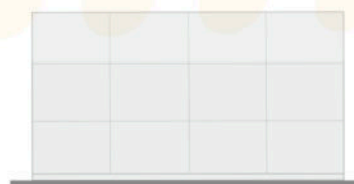
- DGX can offer two solutions on transparent LED screen. One is in Side Emitting, another is Front Emitting.



Multiple Installation Options



▲ XT Series in Hanging Installation



▲ XC Series in Fixed Installation

85%

Over 85% Transparency Ratio

PC Import

PC Cover High Transparency

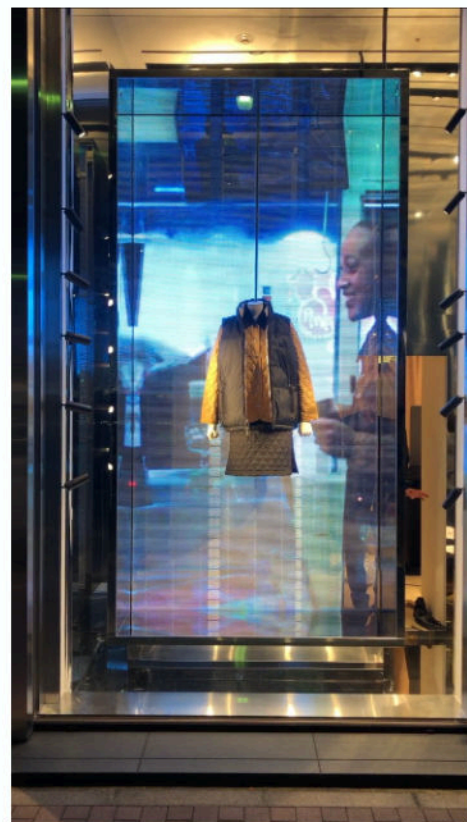
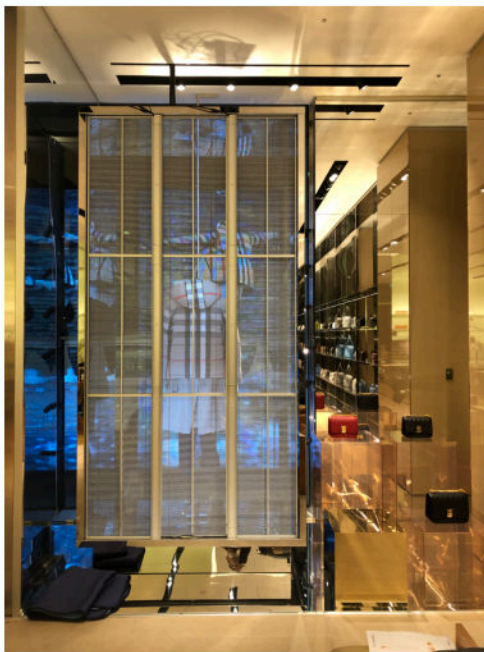
Application Show

XC Series - Fixed Install

- o DGX XC series - transparent LED screen, is with nice appearance, over 85% transparency ratio, widely used in stage, large shopping malls, chain stores, science and technology museums, glass windows, indoor media advertising etc. Due to strict quality control and perfect service, DGX has won high recognition from customers.

XC Series





ピッチサイズ	P3.9*7.8
LEDランプ	SMD1921
ドット数	32768dots/m2
輝度	4500nits
IP rating	IP33
Cabinet Materiel	Aluminum
Scan	8scan
重量	6kg
Module size	500x125mm
Cabinet size	1000*500mm
Module resolution	128 x16dots
最大使用電力容量	800 w/sqm
平均使用電力容量	200 w/sqm
Viewing Angle	4m-50m
Operating system	AV, S-Video, VGA, DVI, YPbPr, HDMI, SDI
Work humidity	10% ~ 90%
Work environment	temp: -10°C ~ +40°C humidity: 15%~60%RH

