

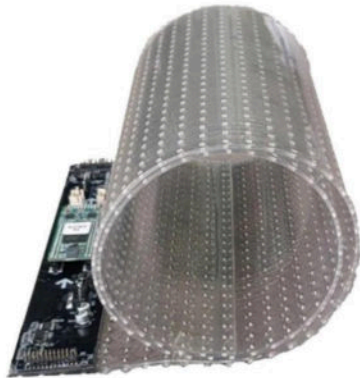
Crystal Film LED Display

TC Series

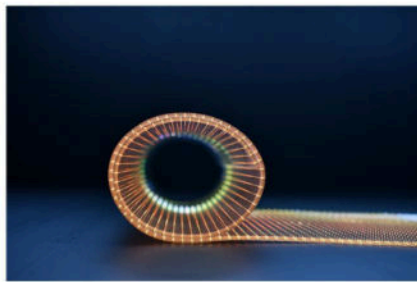
P4-P30

www.xiv-tec.com

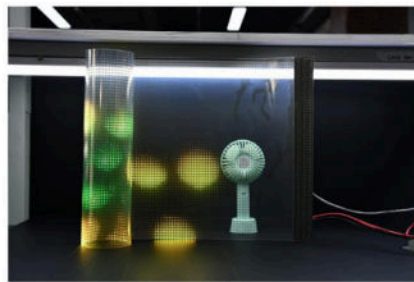
TC Series LED Crystal Film Screen Feature



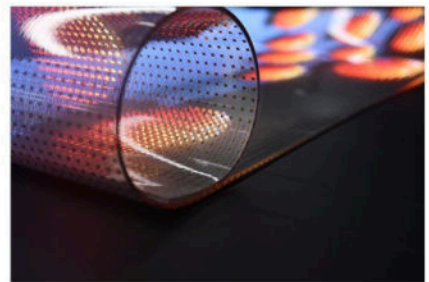
- 1. High Transparency:** High light transmission, seamlessly integrates with glass when powered off.
- 2. Ultra-Thin and Lightweight:** 3mm thickness, weighs only 3.5kg/m².
- 3. Flexible and Bendable:** Suitable for curved glass structures.
- 4. Customizable Cutting:** Supports any size and shape customization.
- 5. Wide Viewing Angle:** 140° full-view with no blind spots or color distortion.
- 6. Safe and Aesthetic:** Hidden power design with no exposed components.
- 7. Easy Installation:** Can be directly adhered to glass for quick setup.



Independently Developed

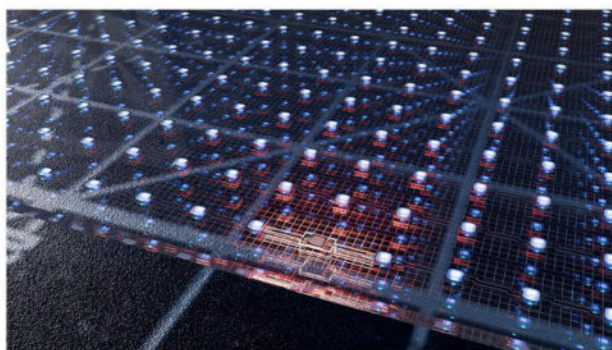


Ultra Transparent

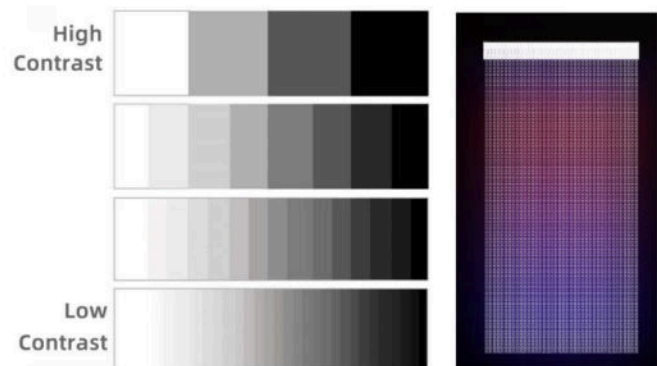


Unlimited Expansion

Craftsmanship Features



Breakpoint Continuation Transmission

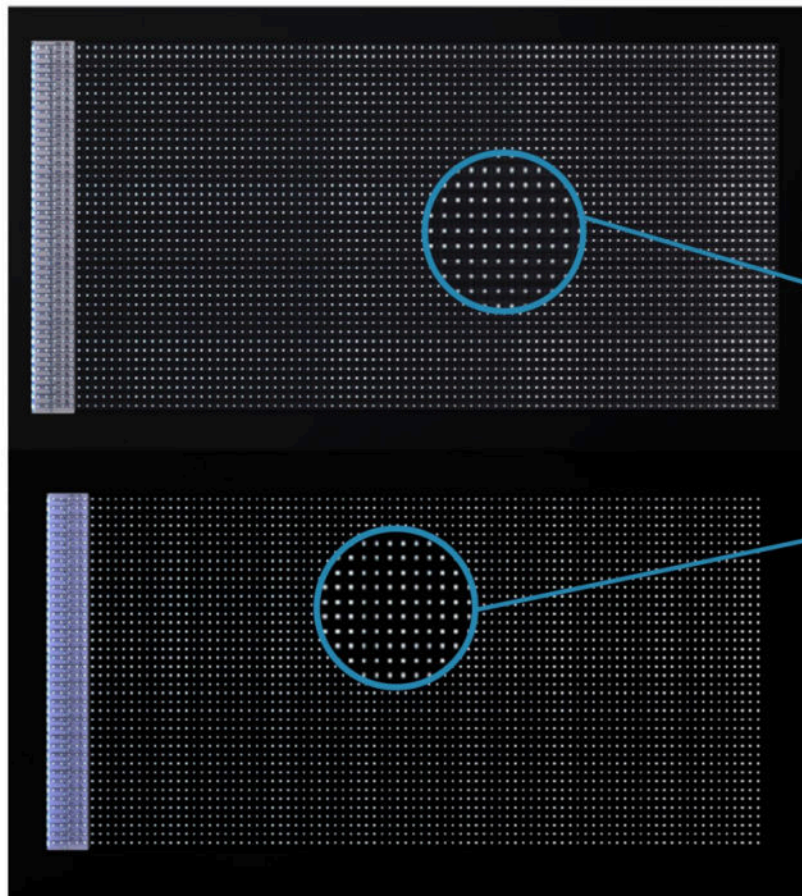
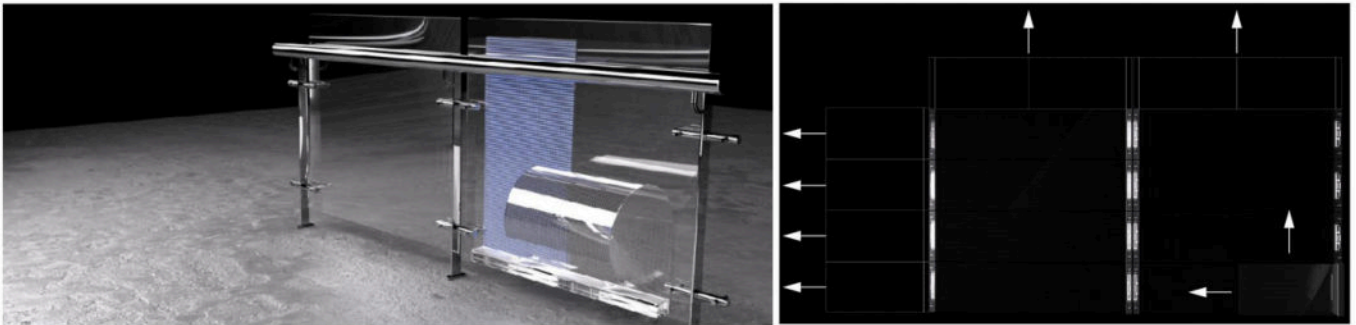


High Gray Scale Display (True 16-bit)

Installation Features

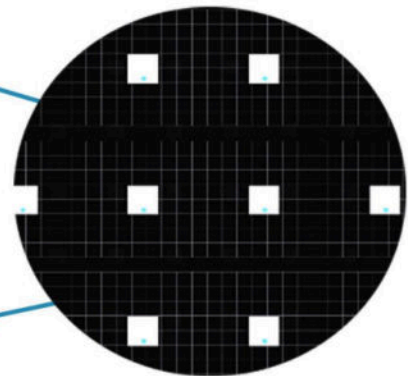
No steel structure required; simply attach the thin screen and connect the power and signal.

In-house developed gel coating technology (The screen itself has adhesive properties, allowing it to be directly attached to the glass surface. The gel's strong adhesive force increases over time due to its inherent characteristics.)



Adopt integrated driver LED chips to enhance its transparency

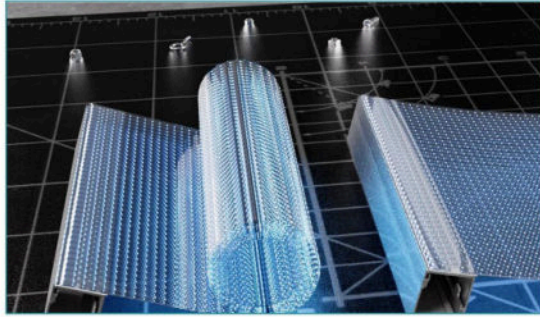
Invisible Grid Circuit



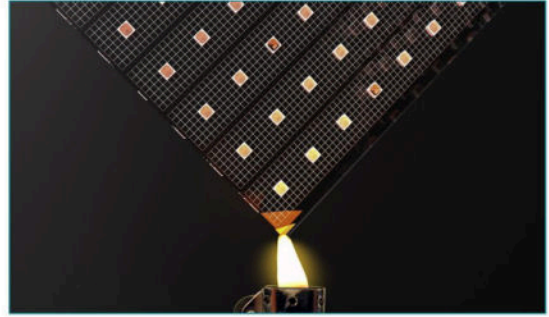
1.3mmx1.3mm
SMD1515chips

Adopt invisible grid circuits to enhance its transparency.

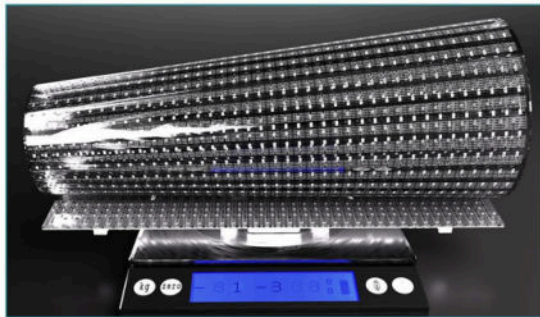
Special Features



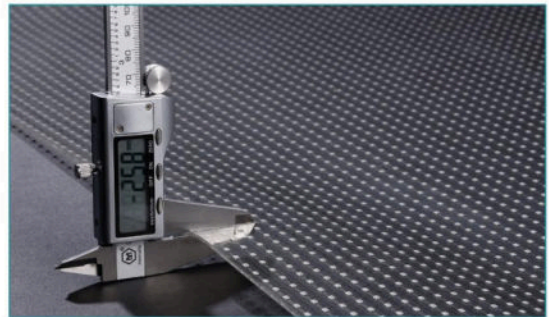
Flexible: Suitable for any curved surface



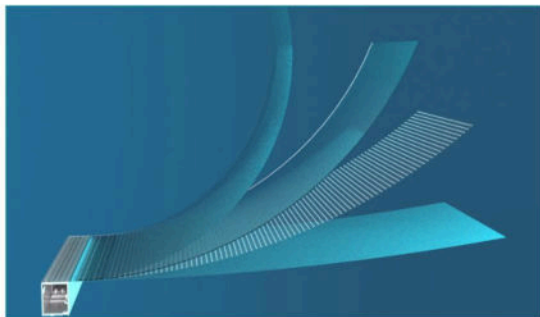
Flame Retardant and UV Resistant



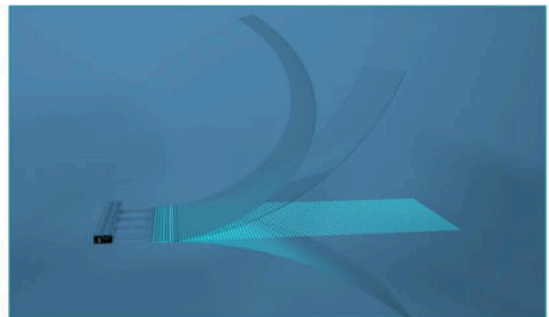
Lightweight and Thin: Thickness: 2.5mm



Lightweight: Weight: 1.3kg



Hard Connection



Flexible Ribbon Cable Connection

Comparison Features



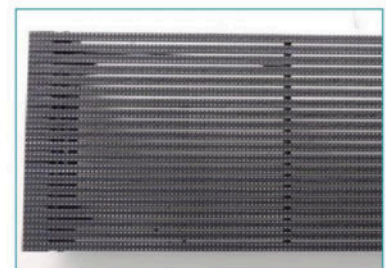
Crystal Film LED Display

VS



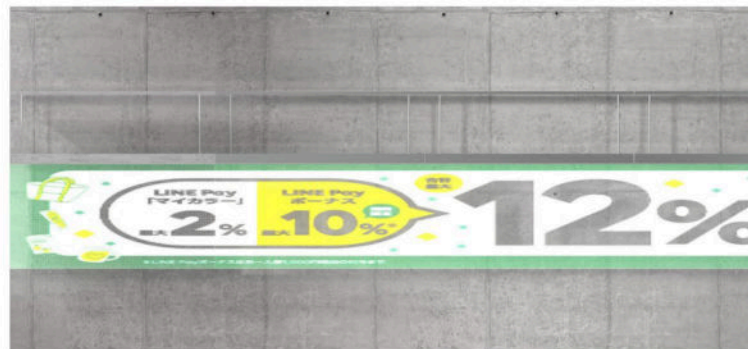
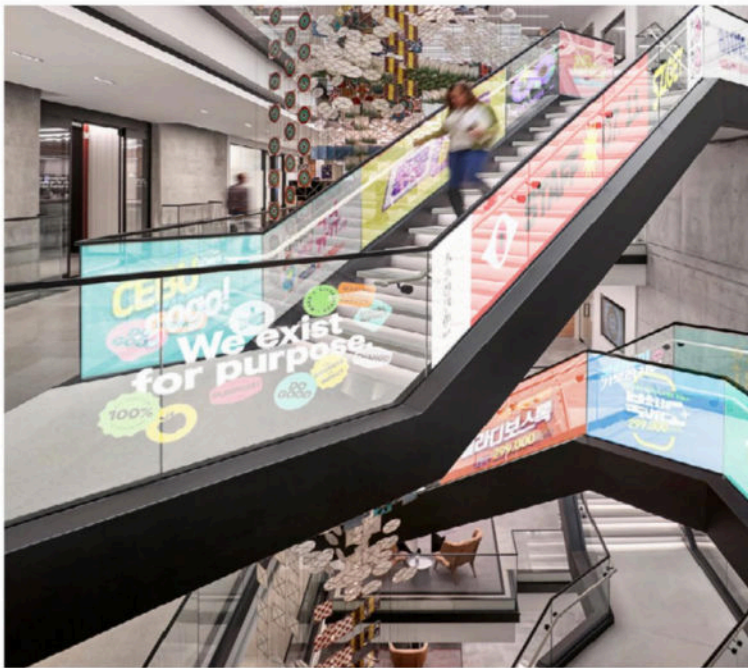
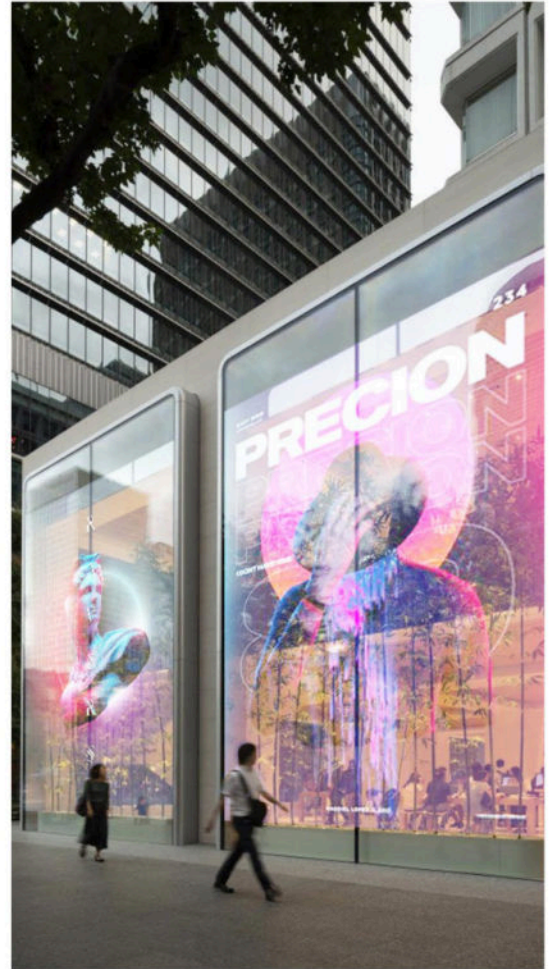
Film LED Display

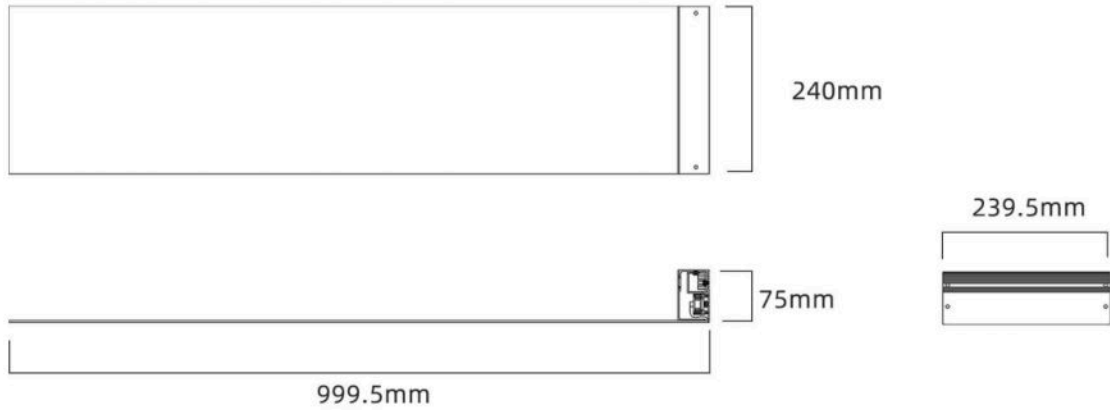
VS



Grille LED Screen

Application scenario





Model	P4-4	P4-8	P5	P6	P8	P10	P16	P20	P30
Pixel Pitch	4mm*4mm	4mm*8mm	5mm*5mm	6mm*6mm	8mm*8mm	10mm*10mm	5.625mm*15.625mm	20mm*20mm	30mm*30mm
Pixel/㎡	62500	31250	40000	27889	15625	10000	3906	2500	1111
Pixel Composition	1R1G1B	1R1G1B	1R1G1B	1R1G1B	1R1G1B	1R1G1B	1R1G1B	1R1G1B	1R1G1B
Module Size	1000mm*240mm	1000mm*240mm	1000mm*240mm	1000mm*240mm	1000mm*240mm	1000mm*240mm	1000mm*240mm	1000mm*240mm	1020mm*240mm
Module Resolution	250*60	250*30	200*48	167*40	125*30	100*24	64*15	50*12	34*8
Pixel Resolution/㎡	250*250	250*125	200*200	167*167	125*125	100*100	64*64	50*50	34*34
Transparency Rate	≥85%	≥85%	≥85%	≥85%	≥85%	≥90%	≥90%	≥90%	≥95%
Weight/㎡	≤3.5KG	≤3.5KG	≤3.5KG	≤3.5KG	≤3.5KG	≤3.5KG	≤3.5KG	≤3.5KG	≤8KG
Brightness (cd/㎡)	≥1200	≥1500	≥1500	≥1500	≥2000	≥2000	≥1500	≥1500	≥1500
Peak Power (W/㎡)	400	400	400	400	400	400	400	400	400
Average Power	200	200	200	200	200	200	200	200	200
Refresh Rate	≥3840	≥3840	≥3840	≥3840	≥3840	≥3840	≥3840	≥3840	≥3840
Grayscale Level (bit)	16	16	16	16	16	16	16	16	16
Angle of View (H-V)	140°-140°	140°-140°	140°-140°	140°-140°	140°-140°	140°-140°	140°-140°	140°-140°	140°-140°
Working Temperature	-20℃-50℃	-20℃-50℃	-20℃-50℃	-20℃-50℃	-20℃-50℃	-20℃-50℃	-20℃-50℃	-20℃-50℃	-20℃-50℃
Input Voltage	110-240v	110-240v	110-240v	110-240v	110-240v	110-240v	110-240v	110-240v	110-240v
Service Life(Hours)	100000	100000	100000	100000	100000	100000	100000	100000	100000



✉ info@xiv-tec.com

📍 Building 4A-303, Huiye Hi-Tech Industry Park,
Fenghuang Str. Guangming District, Shenzhen, China

CE  RoHS  US