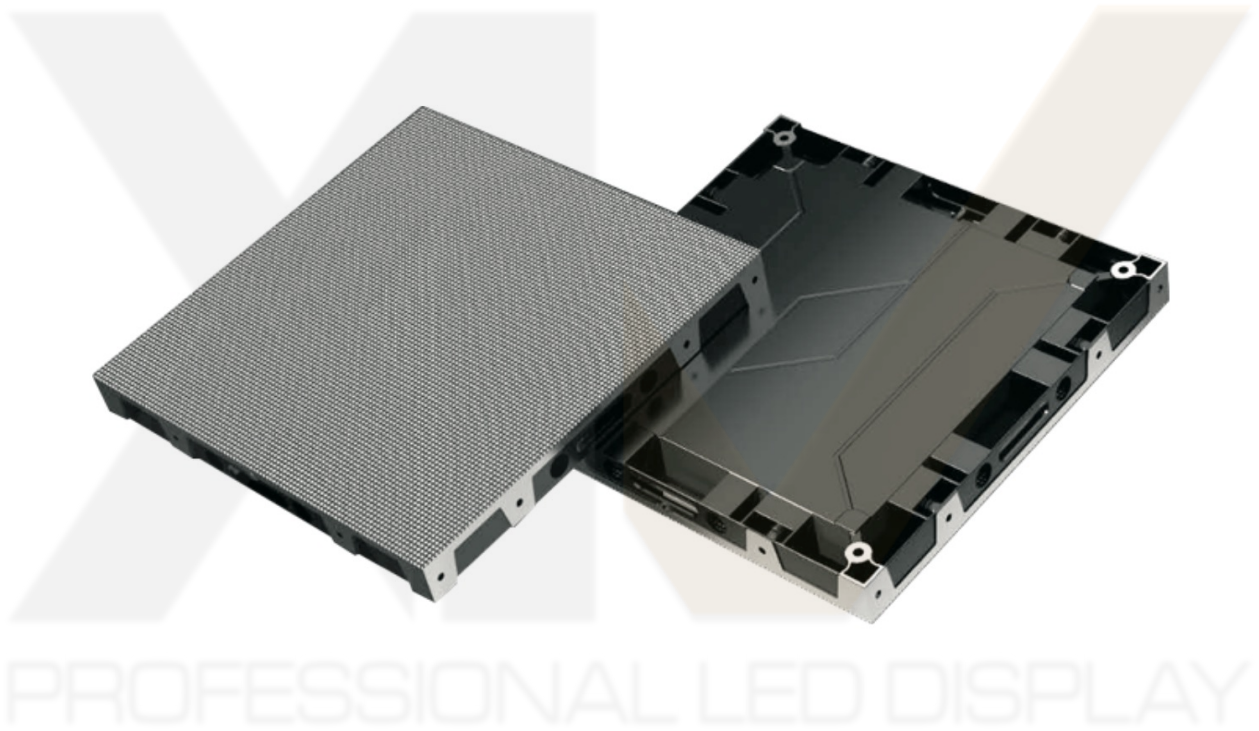




*Full indoor service  
cabinet design, attach on the wall without space*

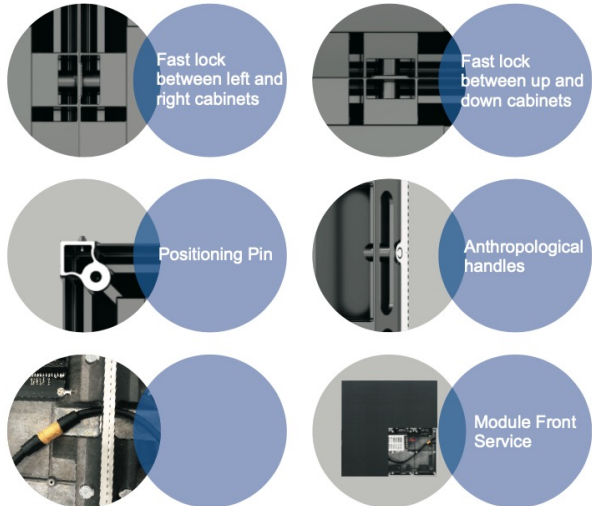
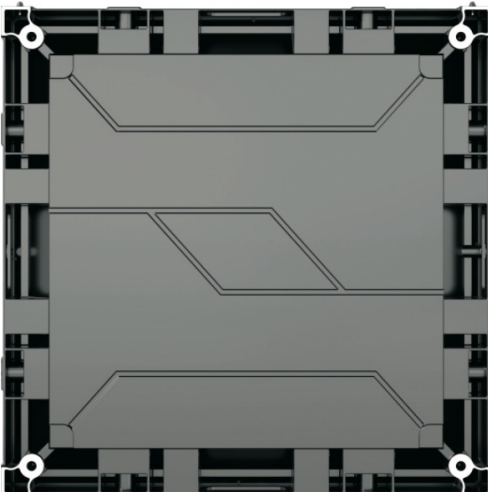


***FS-F(1.579/1.67/1.875/2.0/2.5/3)***



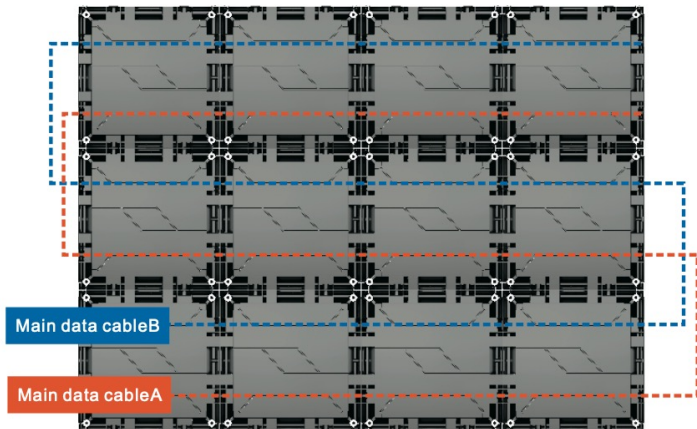
## Energy Saving

Fast and easy maintenance

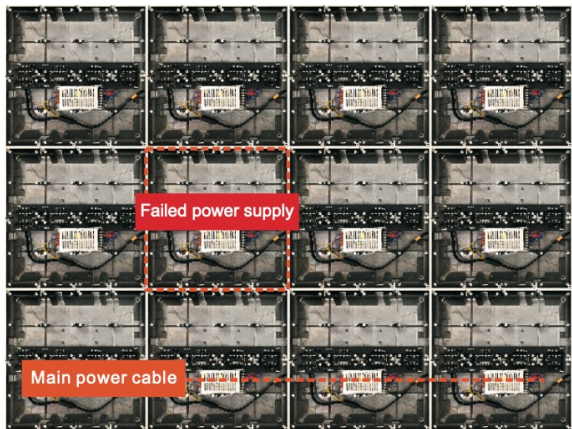


## Data redundancy & current sharing backup

1.Data input and output redundancy Design 2.Electromagnetic compatibility and protection



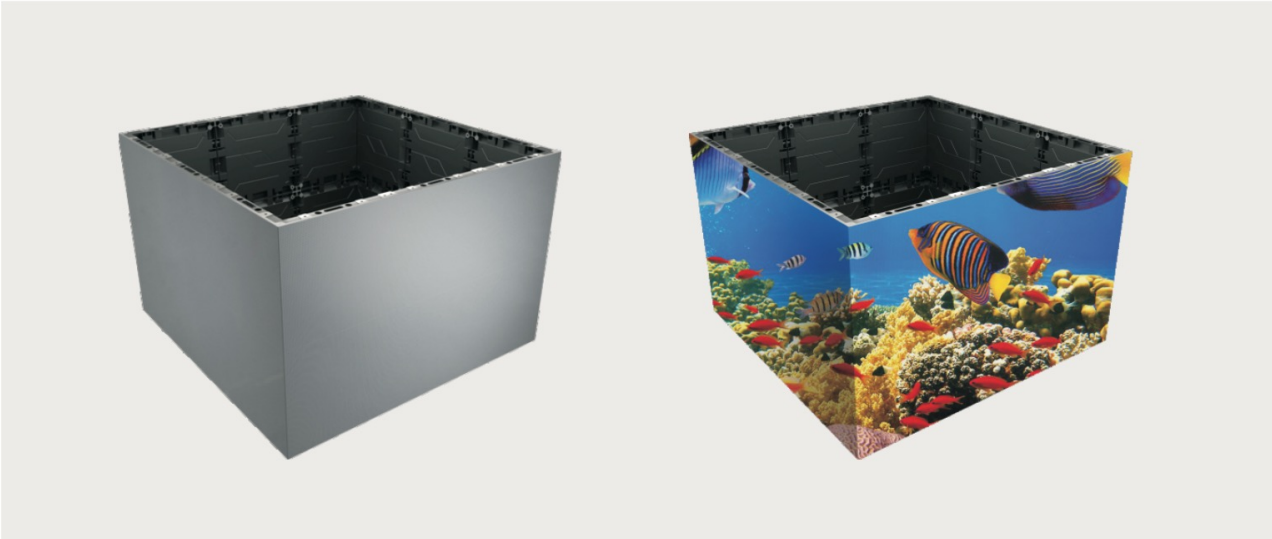
Data redundancy guarantees no signal failure



Current sharing gives consistent power to panel in case of any panel power supply failure.

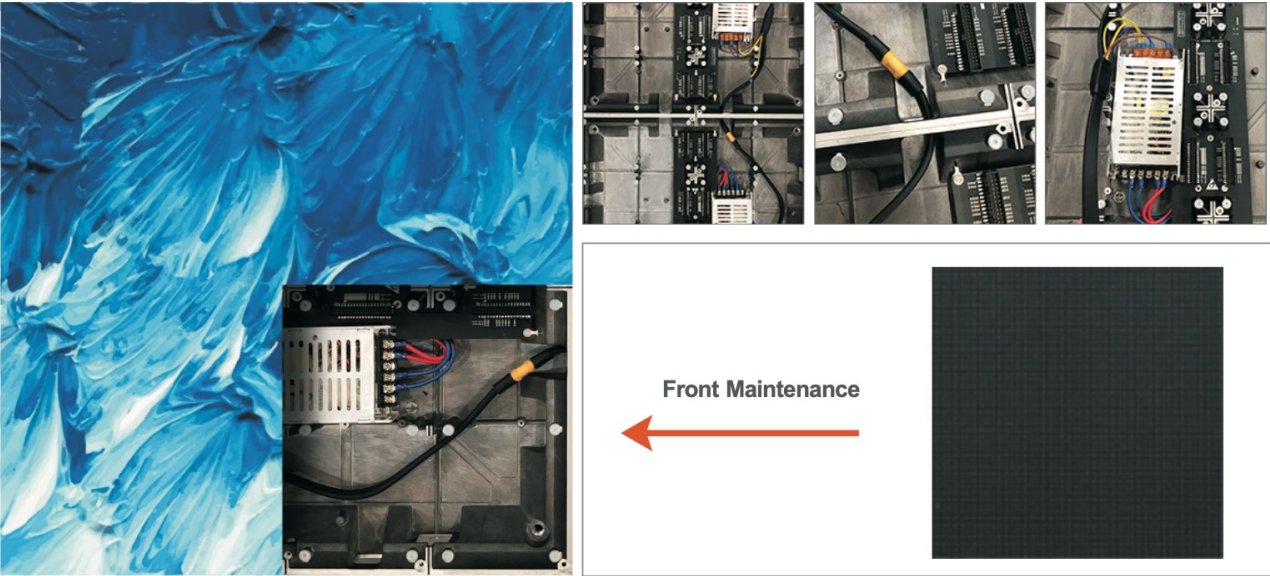
## 90° Seamless splicing

Right Angle seamless splicing



## Calibration Data Storage

FS-F Series module has memory. Calibration data can be stored in every module. When replacing defected modules with new module, receiving card will read back calibration data from new module. It prevents color and brightness difference after module replacement.



## High Refresh Rate

As PWM IC driver was applied on FS-F Series, it enhances visual refresh rate by reinforcing pulse wave width and dividing conducting time to numbers of shorter conducting time. Besides, GCLK frequency multiplier increases GCLK frequency to realize doubling refresh rate.



( Low Refresh Rate )



( High Refresh Rate )

## High Grayscale

Not only refresh rate, FS-F Series grayscale also benefits from PWM IC driver. Grayscale is smoother comparing with common IC driver especially at low grayscale.



## Multiple Installation Methods

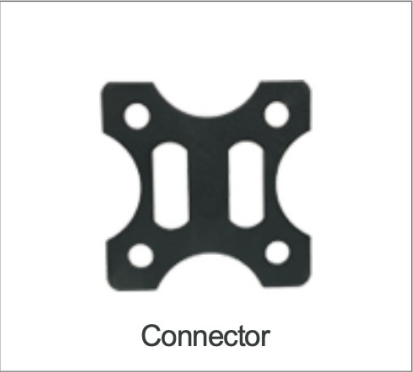
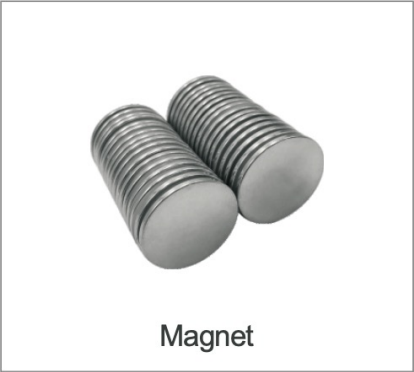


Embedded installation



Support for embedded installation

## Accessories



## Product Specification

FS-F Parameter Sheet						
<b>Pixel Pitch</b>	1.579	1.67	1.875	2	2.5	3
<b>Cabinet Resolution</b>	304*304 dots	288*288 dots	256*256 dots	240*240 dots	192*192 dots	160*160 dots
<b>Pixel Density (dots/m<sup>2</sup>)</b>	401111dots/m <sup>2</sup>	360000dots/m <sup>2</sup>	284444dots/m <sup>2</sup>	250000dots/m <sup>2</sup>	160000dots/m <sup>2</sup>	111111dots/m <sup>2</sup>
<b>Cabinet Dimension</b>	480*480*65 mm	480*480*65 mm	480*480*65 mm	480*480*65 mm	900nits	900nits
<b>Cabinet Material</b>	Die-casting Aluminum					
<b>Cabinet Weight</b>	5.5kg	5.5kg	5.5kg	5.5kg	5.5kg	5.5kg
<b>Color Depth</b>	13 ~14bit	13 ~14bit	13 ~14bit	13 ~14bit	13 ~14bit	13 ~14bit
<b>Refresh Rate</b>	≥3840Hz	≥3840Hz	≥3840Hz	≥3840Hz	≥3840Hz	≥3840Hz
<b>Driver Mode</b>	Constant Current Driver					
<b>Brightness</b>	≥600nits	≥600nits	≥600nits	≥800nits	≥900nits	≥900nits
<b>Viewing Angle (H°)</b>	160 °	160 °	160 °	160 °	160 °	160 °
<b>Viewing Angle (V°)</b>	140 °	140 °	140 °	140 °	140 °	140 °
<b>AC Power Input</b>	AC100V~ 240V					
<b>AC Power Frequency</b>	50~60Hz	50~60Hz	50~60Hz	50~60Hz	50~60Hz	50~60Hz
<b>Max. Power</b>	680w/m <sup>2</sup>	680w/m <sup>2</sup>	570w/m <sup>2</sup>	520w/m <sup>2</sup>	520w/m <sup>2</sup>	550w/m <sup>2</sup>
<b>Avg. Power</b>	230w/m <sup>2</sup>	230w/m <sup>2</sup>	200w/m <sup>2</sup>	170w/m <sup>2</sup>	170w/m <sup>2</sup>	190w/m <sup>2</sup>
<b>Operating Temperature</b>	10°C ~ 40°C					
<b>IP Rating</b>	Front IP40 / Rear IP30					
<b>Installation Type</b>	Fixed / Front Installation					
<b>Cabinet Maintenance</b>	Front /Maintenance					