

X-iFlexible Series

Indoor & Outdoor Solution

www.xiv-tec.com

INDOOR FLEXIBLE MODULE DISPLAY

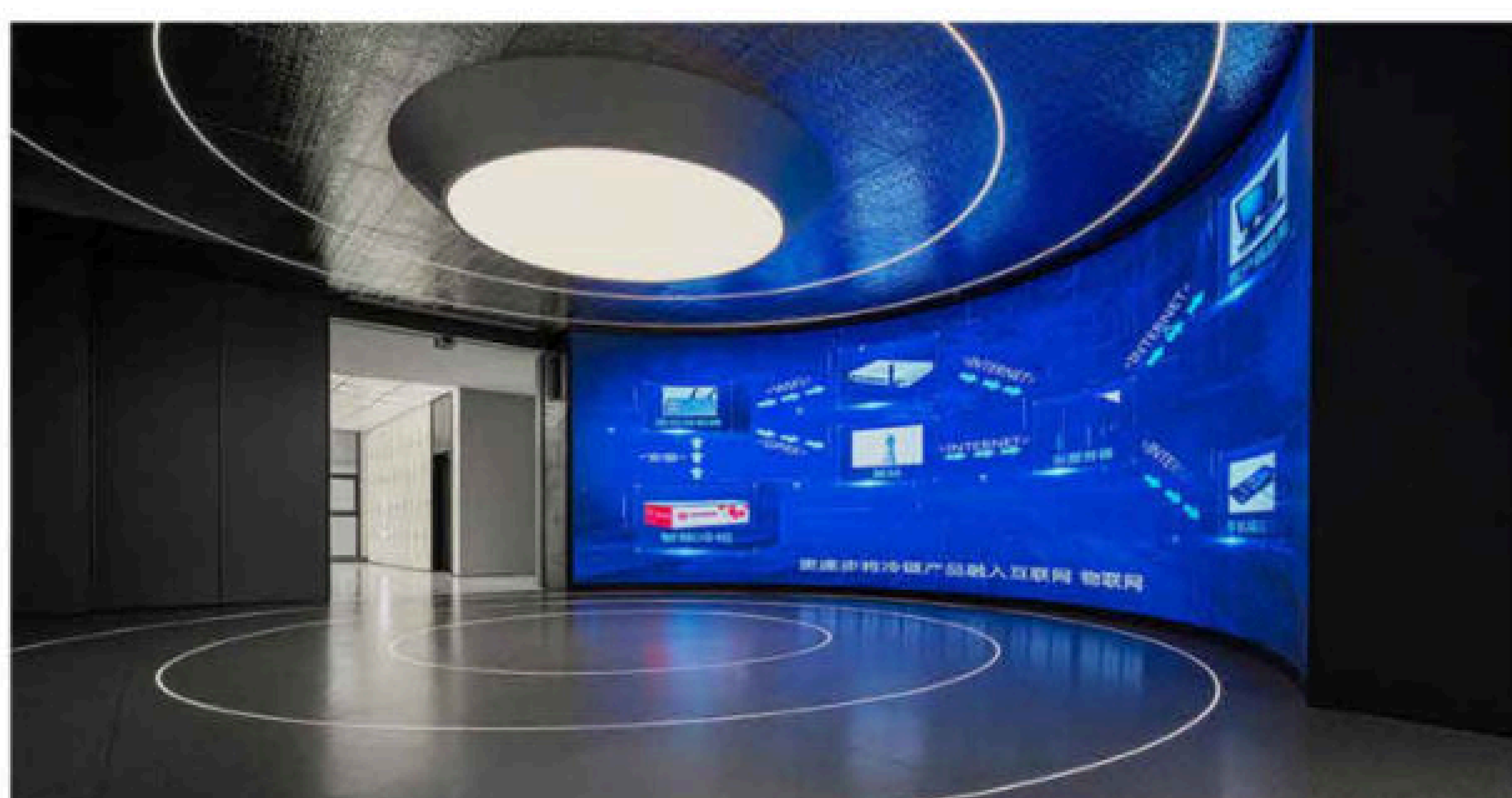
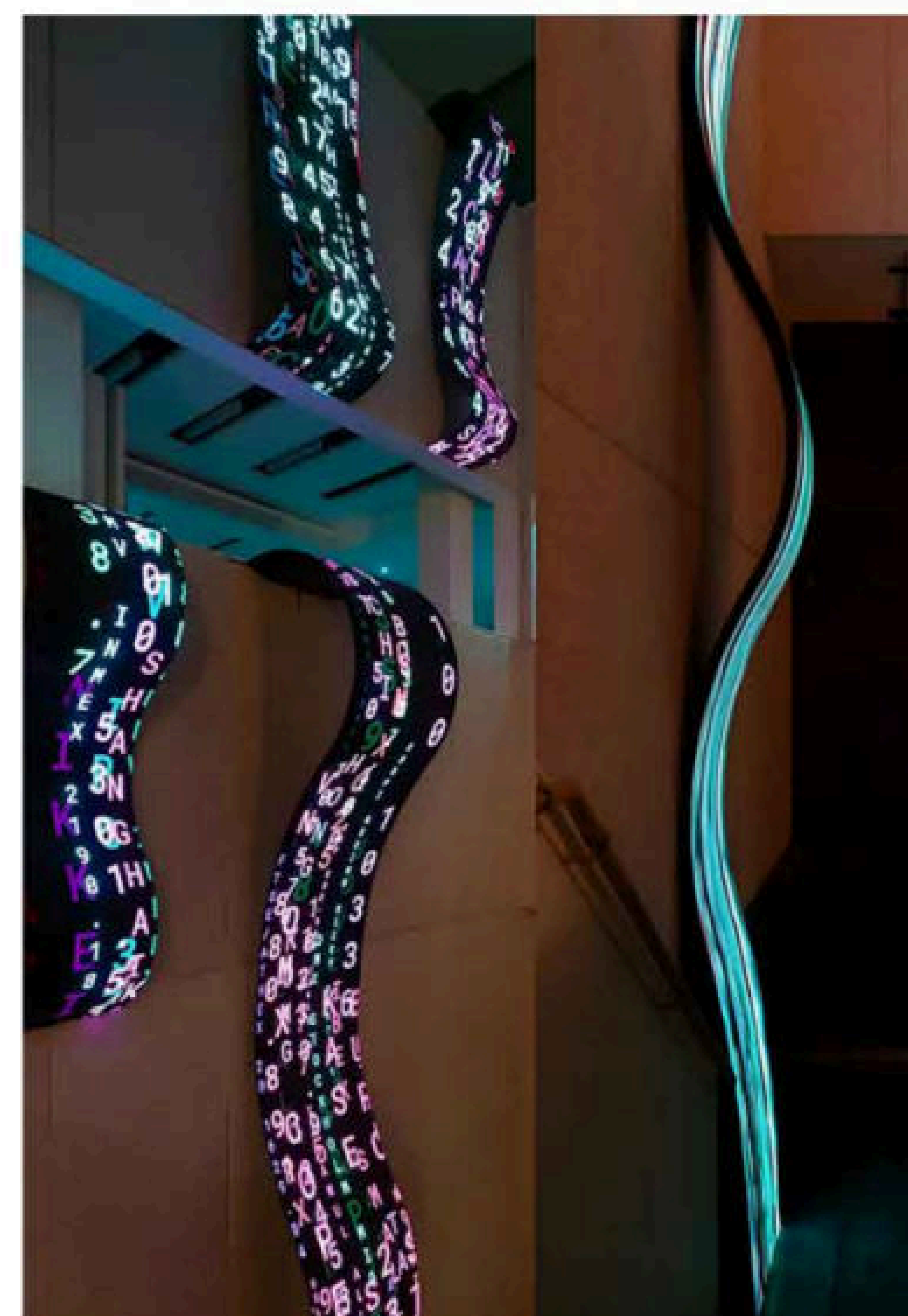
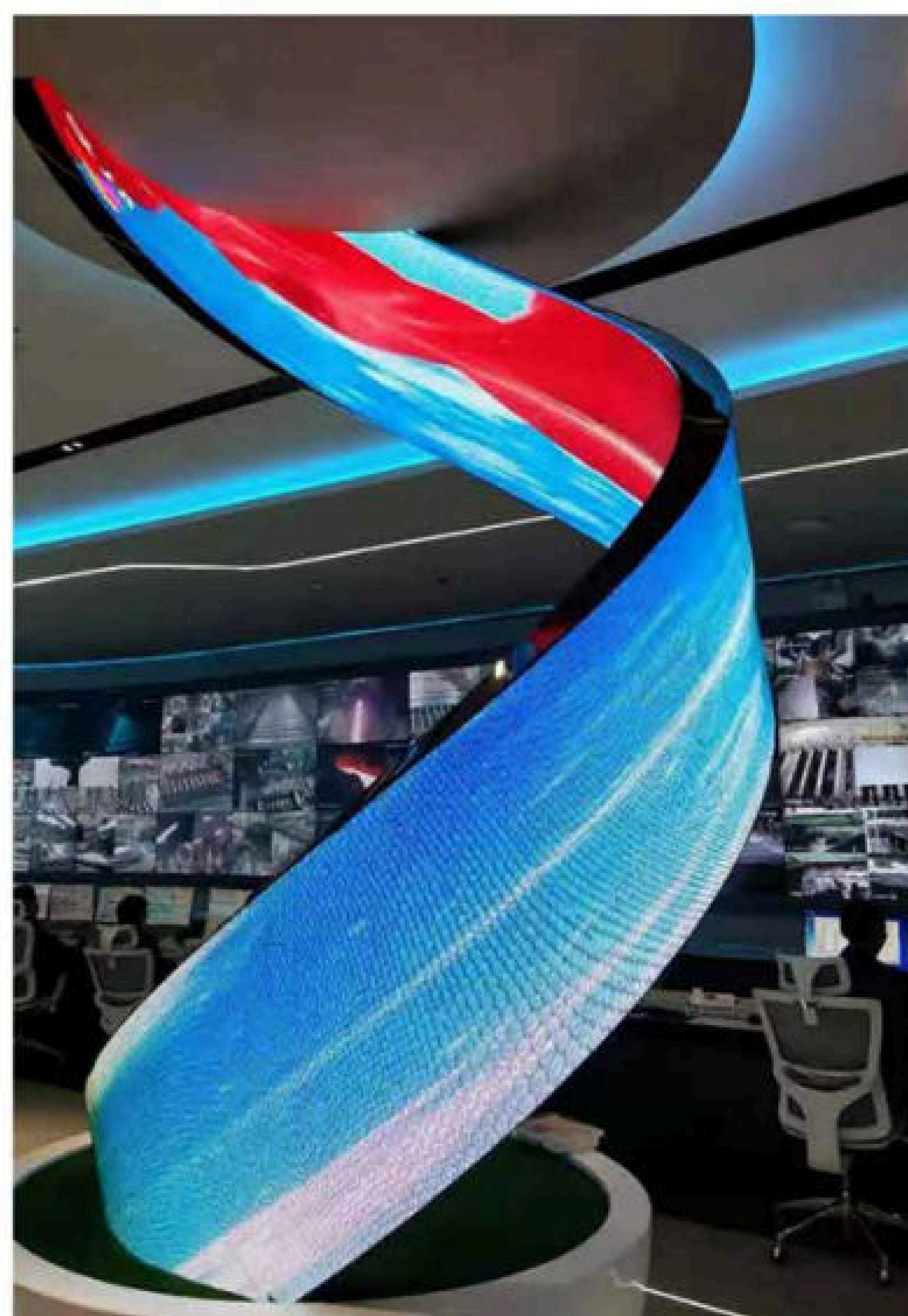
X-Flexible LED modules can be spliced into kinds of curved screens, cylinders, curved surfaces and other displays according to installation requirements.

It is the soft characteristics and technological improvements that show progress. If compared with traditional hardness modules, it injects flexibility and large-angle conceptual design, breaks the traditional technical system, displays soft and multi-faceted curves, conquers various artistic shapes with "softness", creates wonderful visuals for the audience.



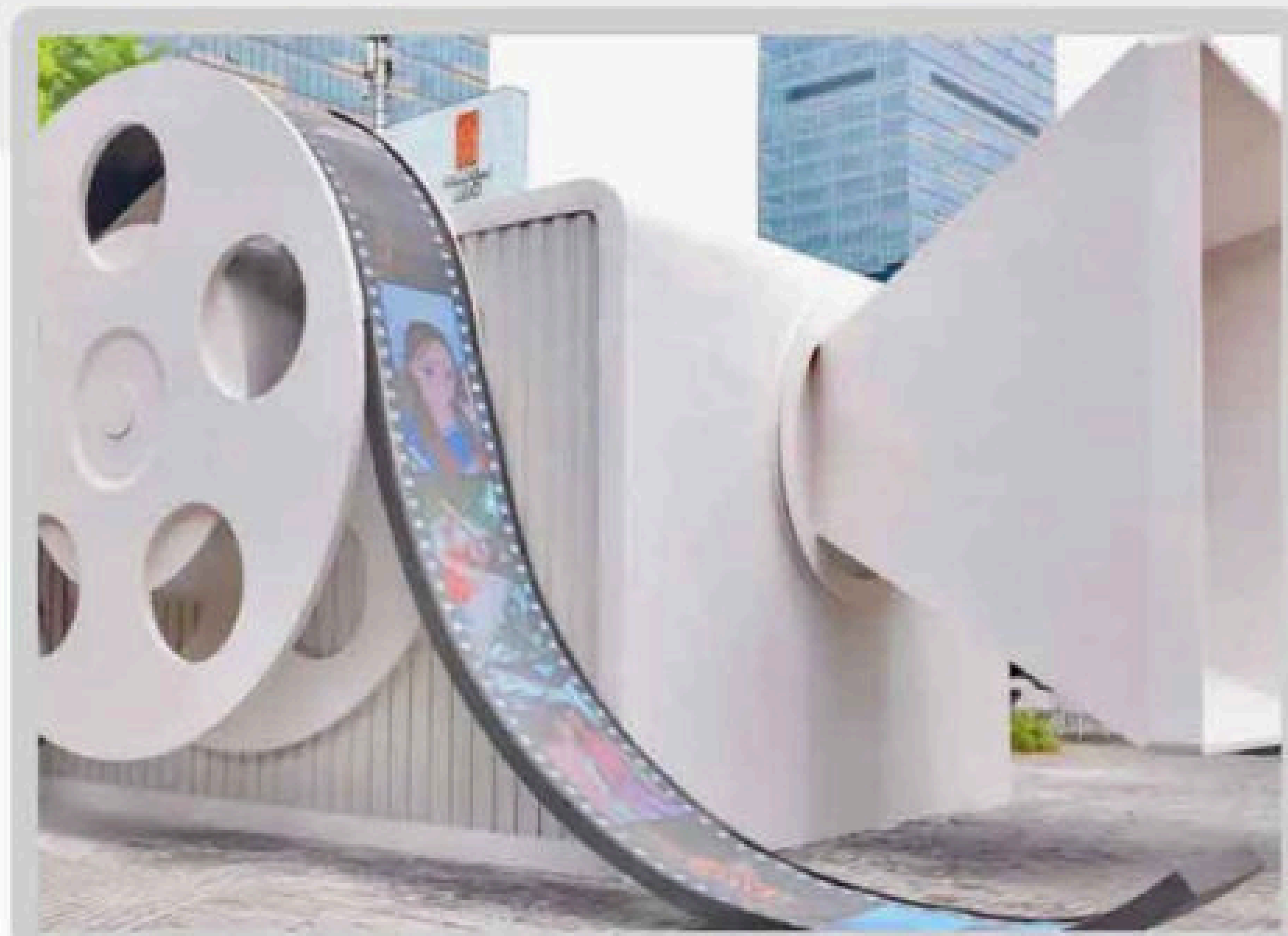
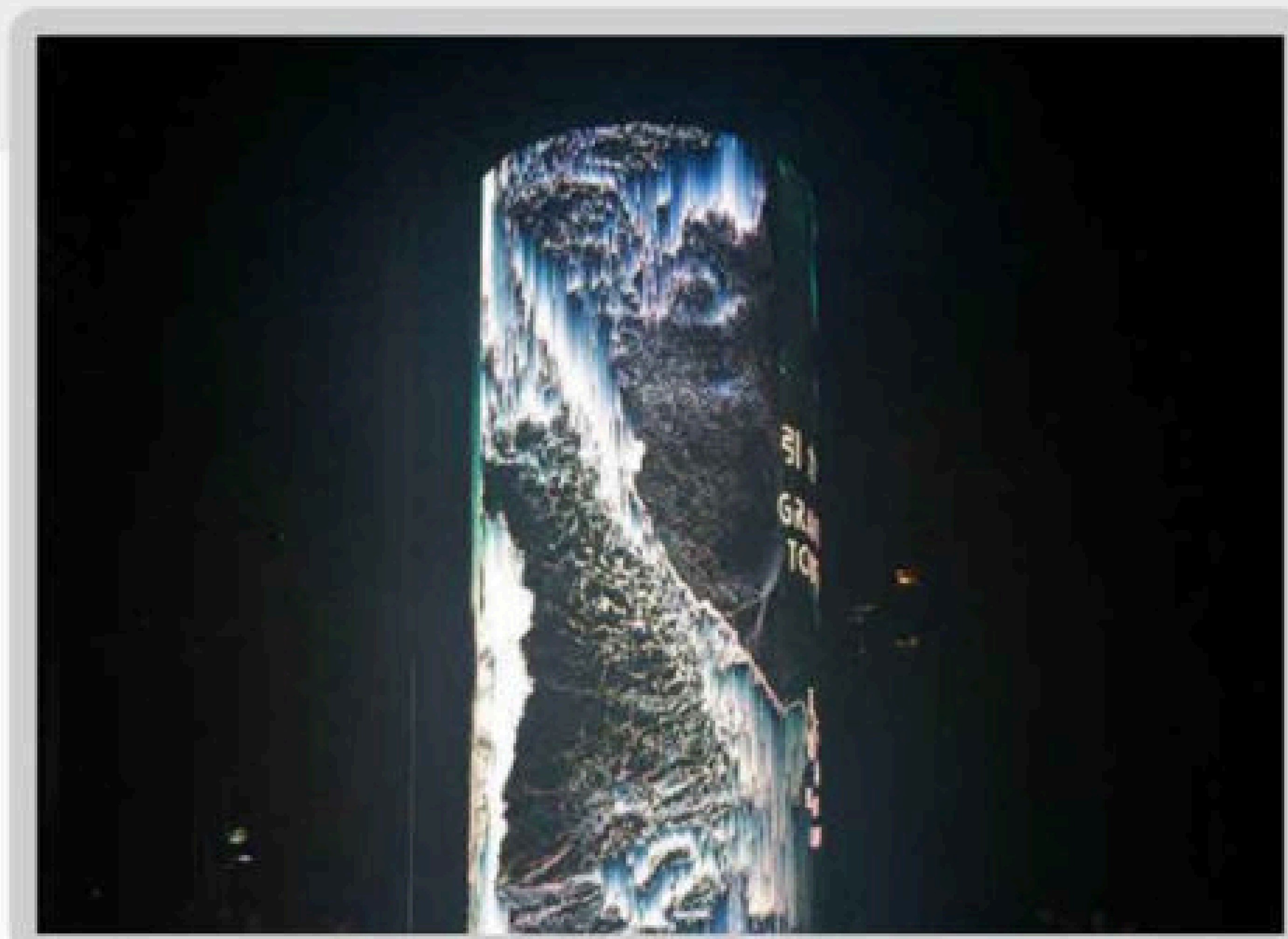
VARIES OF DESIGNS FOR INDOOR

Popular indoor pitches, P0.9/P1.2/P1.5/P1.6/P1.8/P2/P2.5/P3/P4

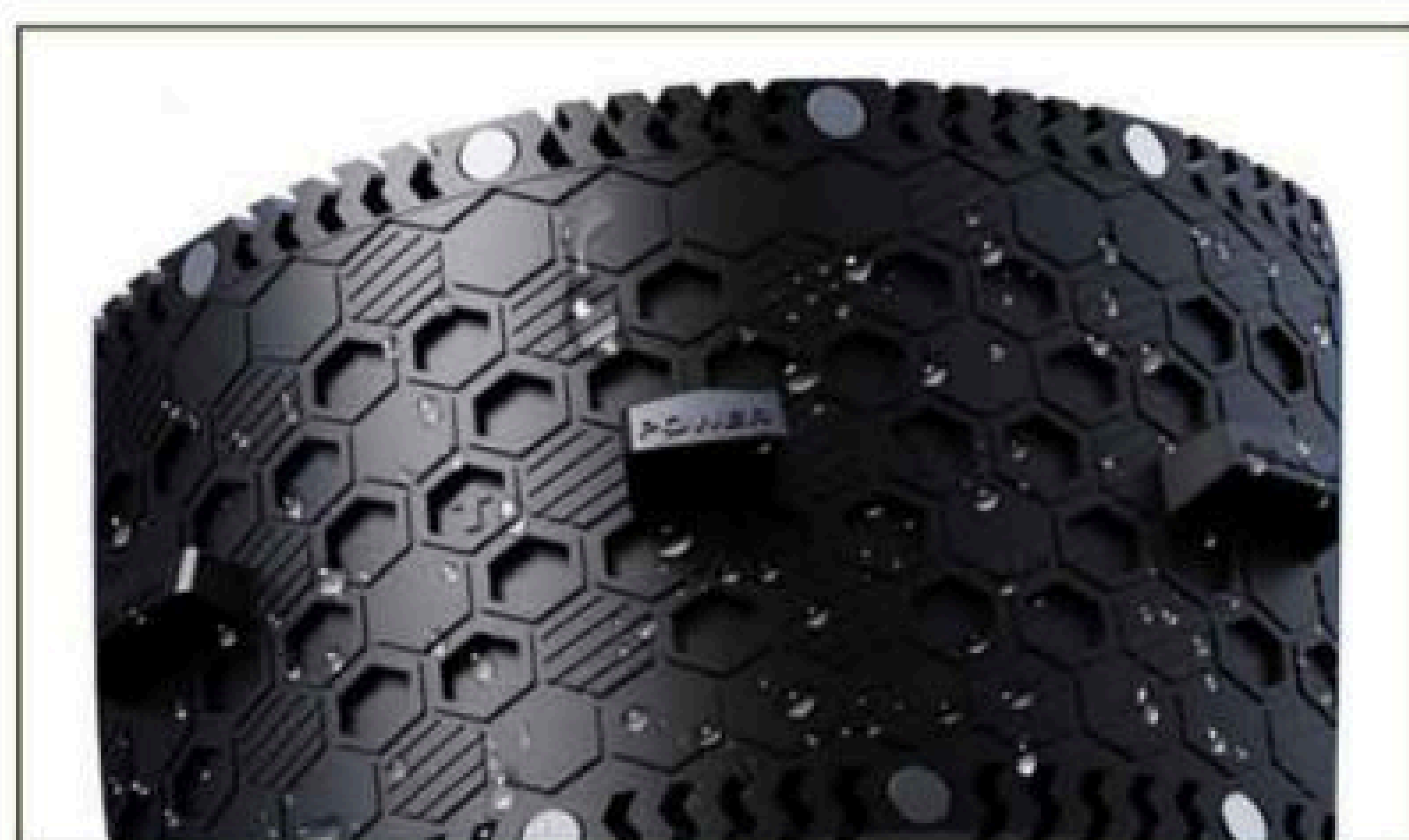


OUTDOOR FLEXIBLE MODULE DISPLAY

- Standard outdoor pitches, P2.5/P3/P4
- Flexible in any direction, vertical and horizontal
- Extremely soft rubber material, possible to make creative LED display shape
- Compatible with metal cabinet
- Application covers both fixed installation and rental events



KEY FEATURES OF ARC CAVE



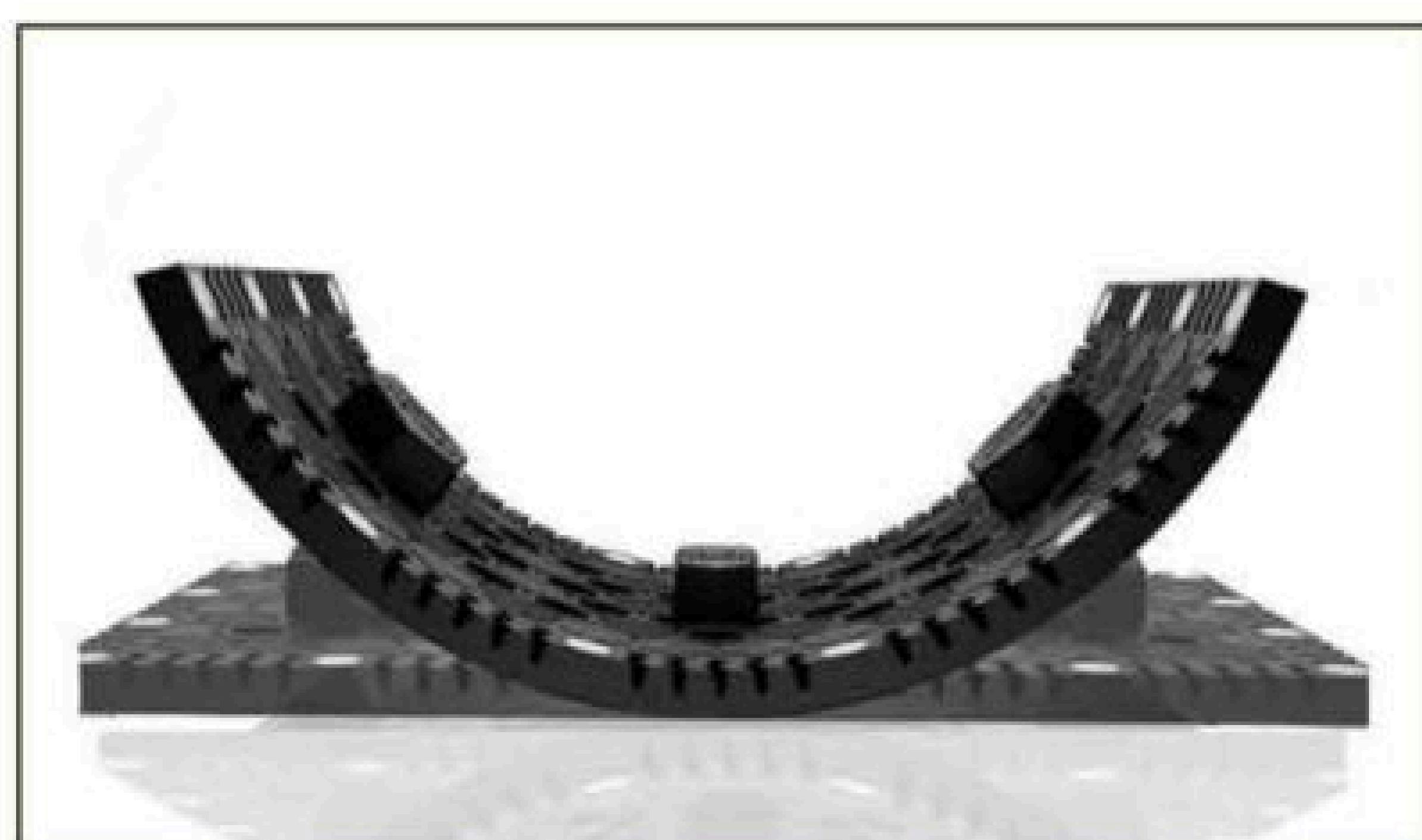
IP65 Waterproof Protection



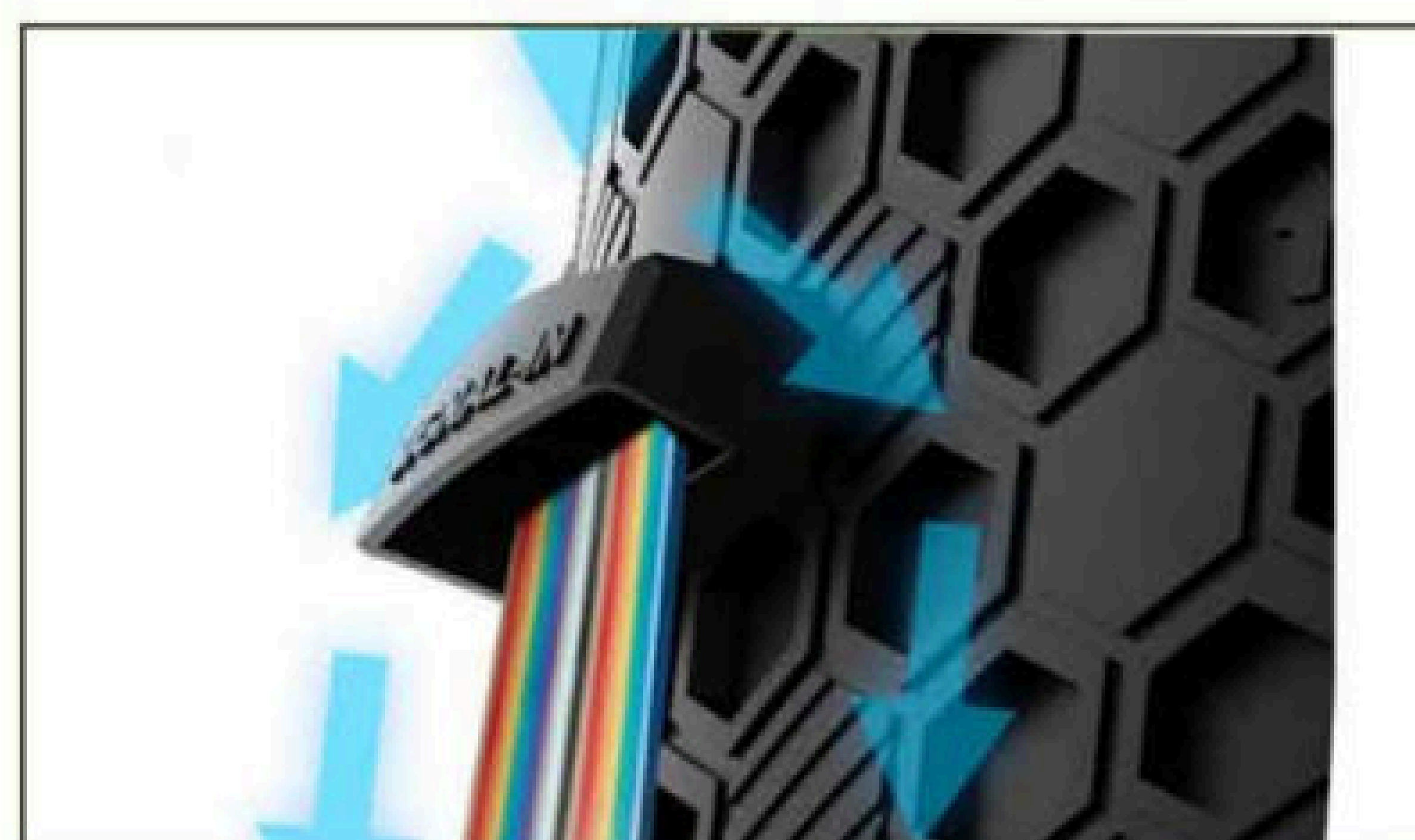
Cell Sealed Design



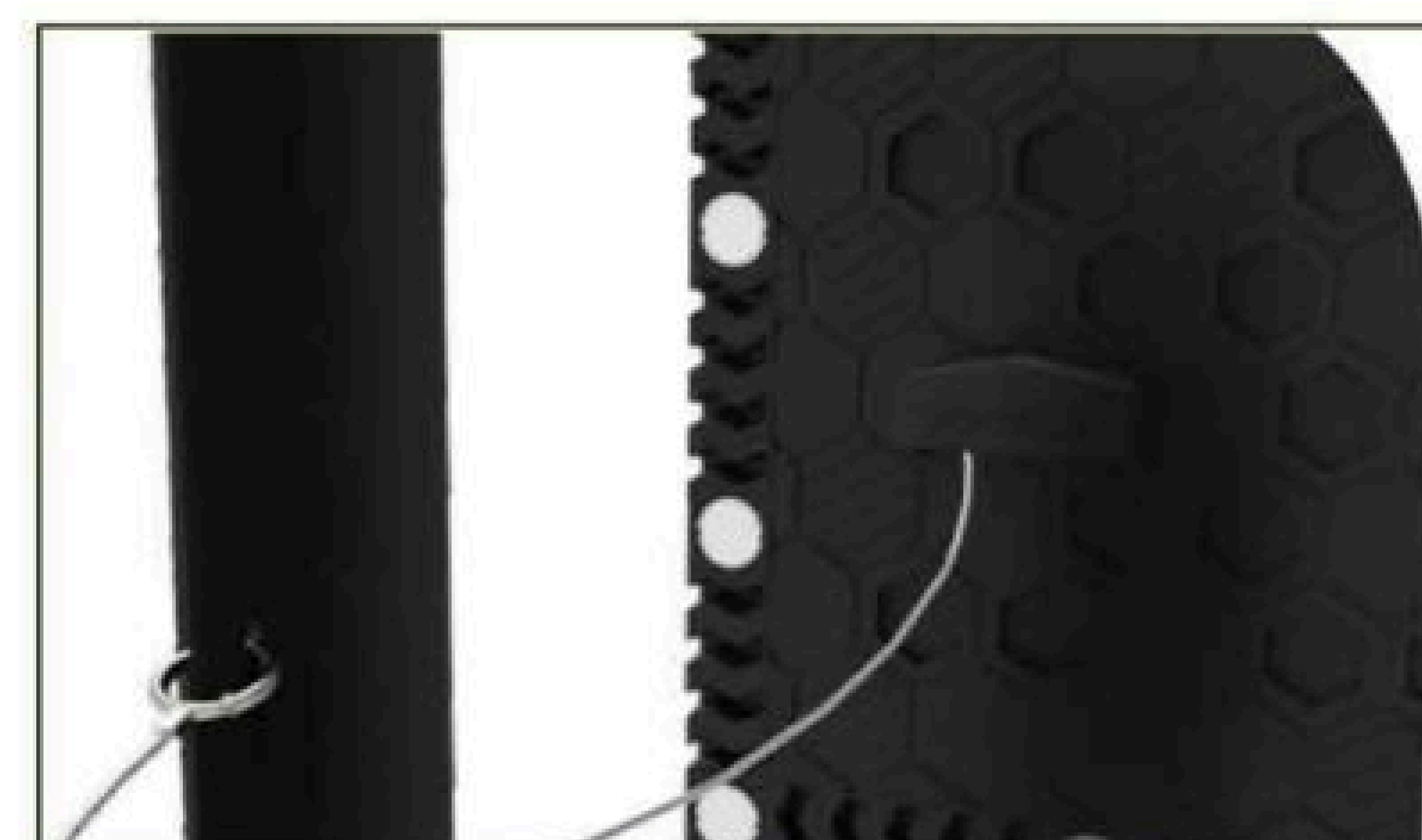
Magnets Salt Spray Anti-corrosion



Concave & Convex Bending

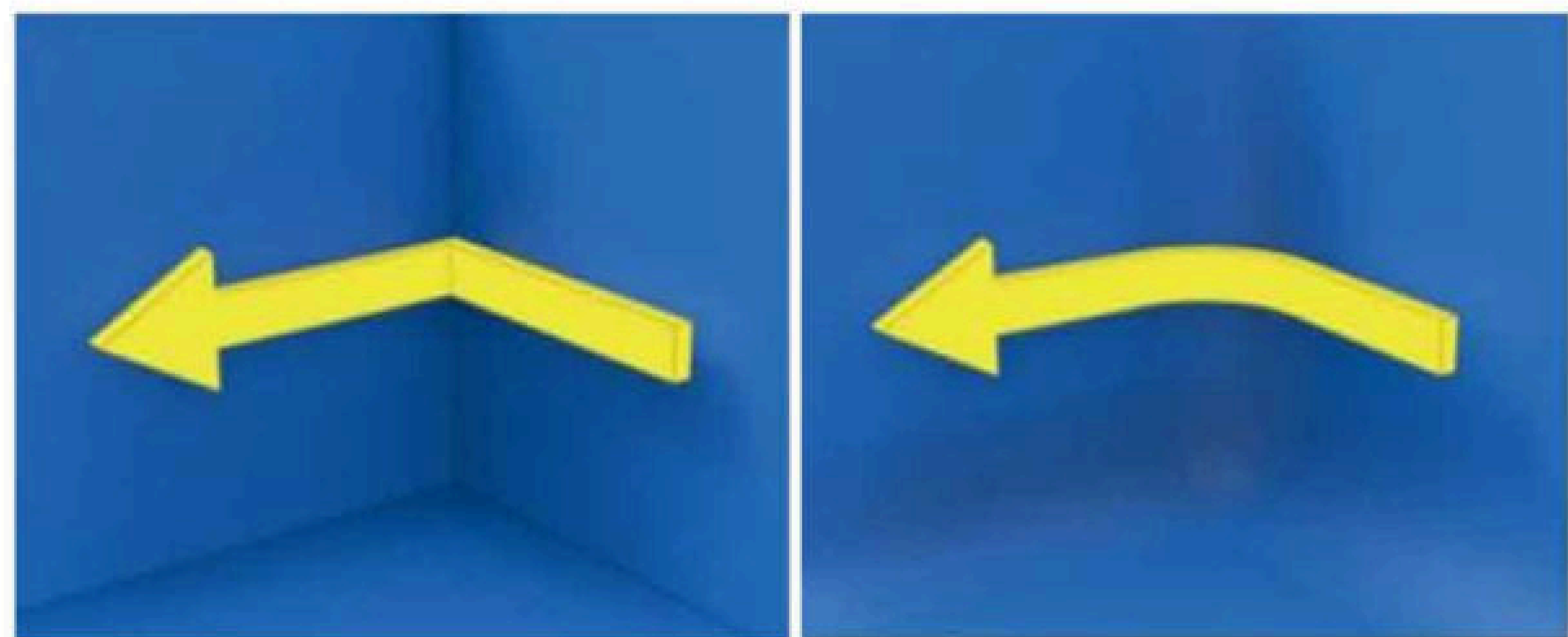


Interface Protection



Anti-fall Guard Setting

CAVE SOLUTION FEATURES



Effectively solve the LED immersive display right angle patchwork problem

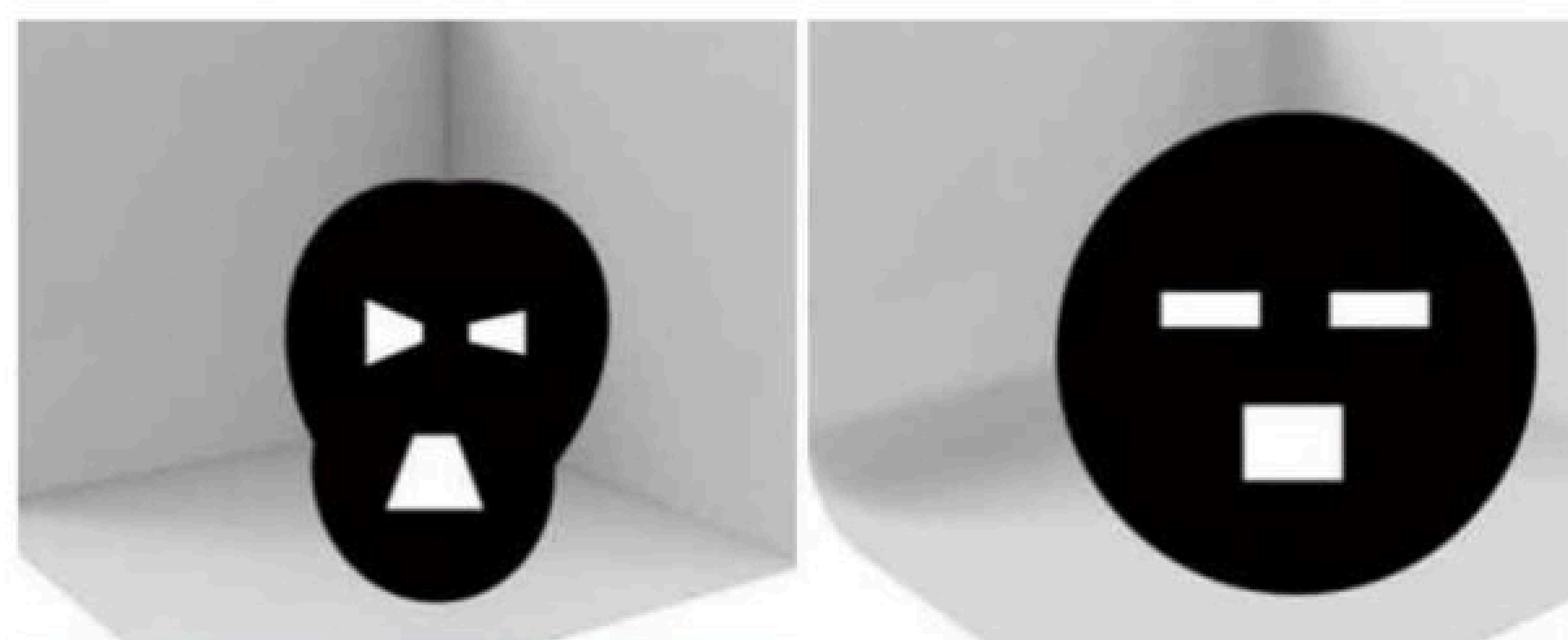
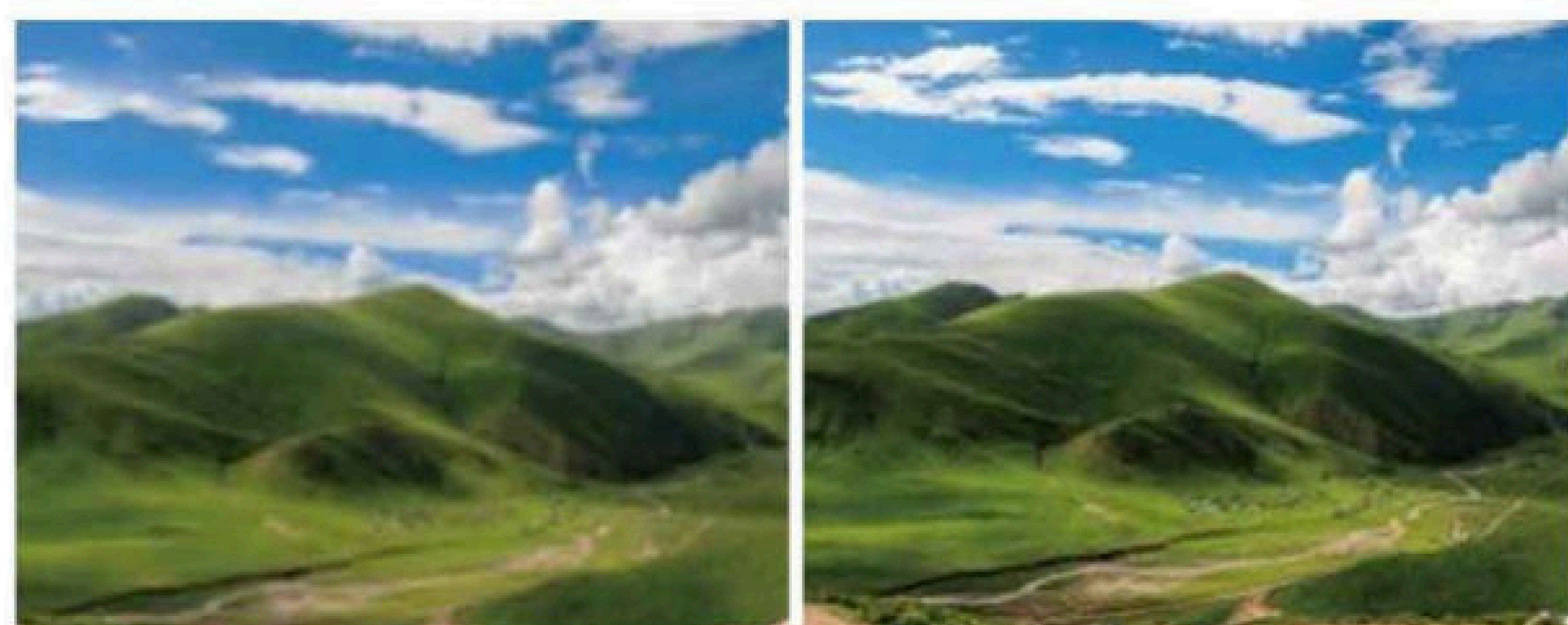


Image no creases, no edges and corners



Flat assembly, picture seamless connection

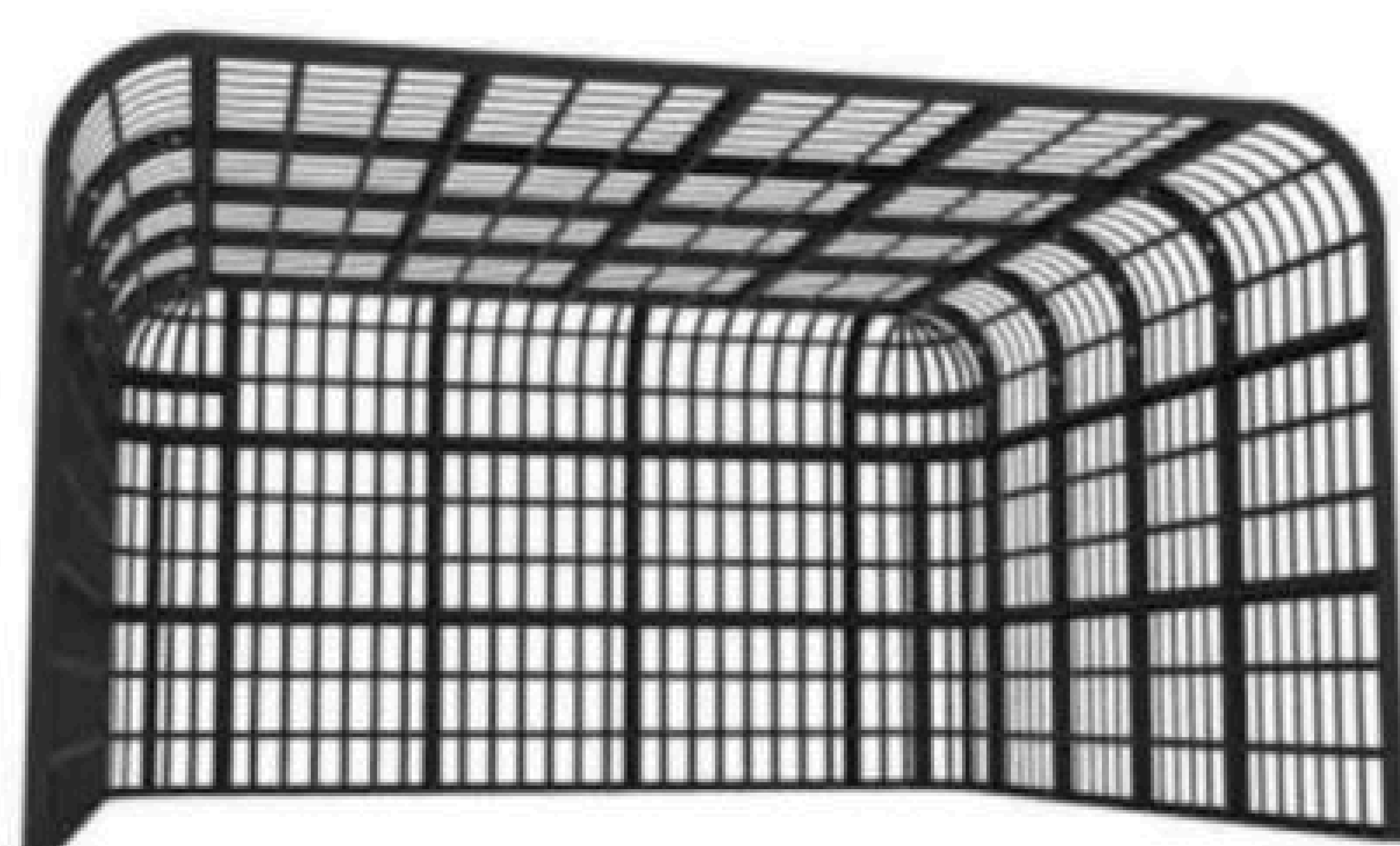


Clear and deeply immersion



The VR interactive virtual reality system with surface perspective correction technology and real-time rendering technology and real-time rendering technology can be watched by many people 360° presents screen content without dead Angle and crease.

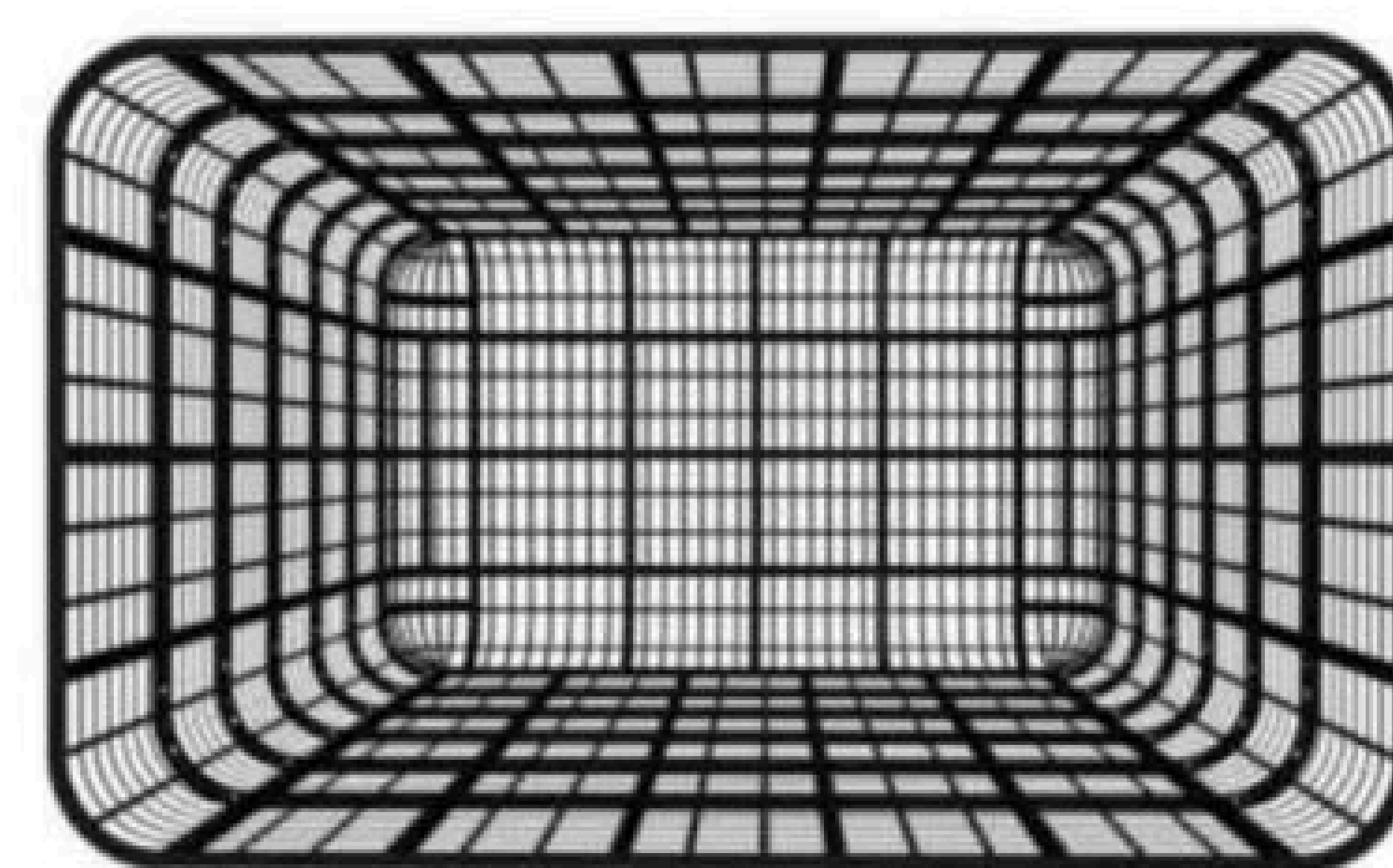
CREATIVE APPLICATIONS



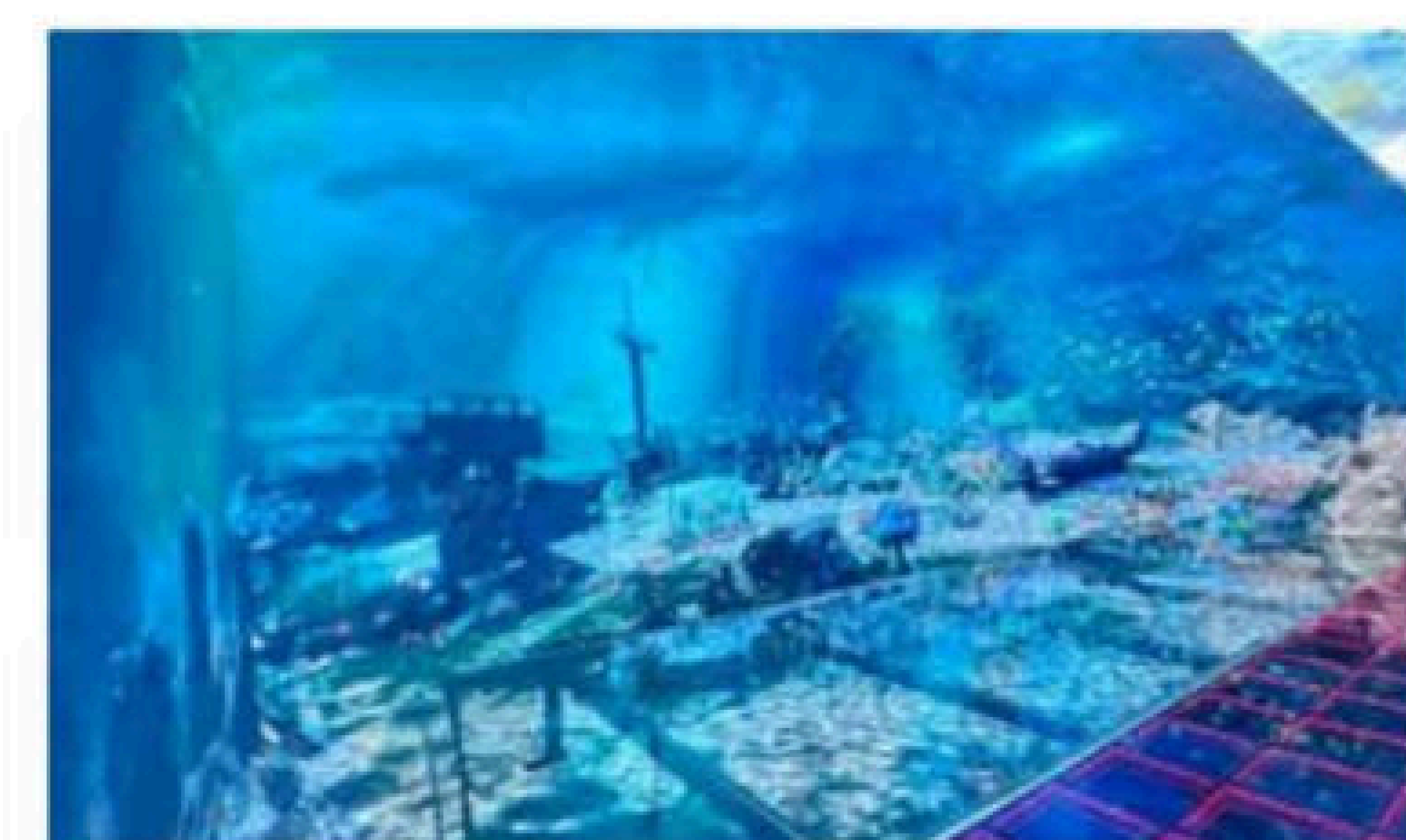
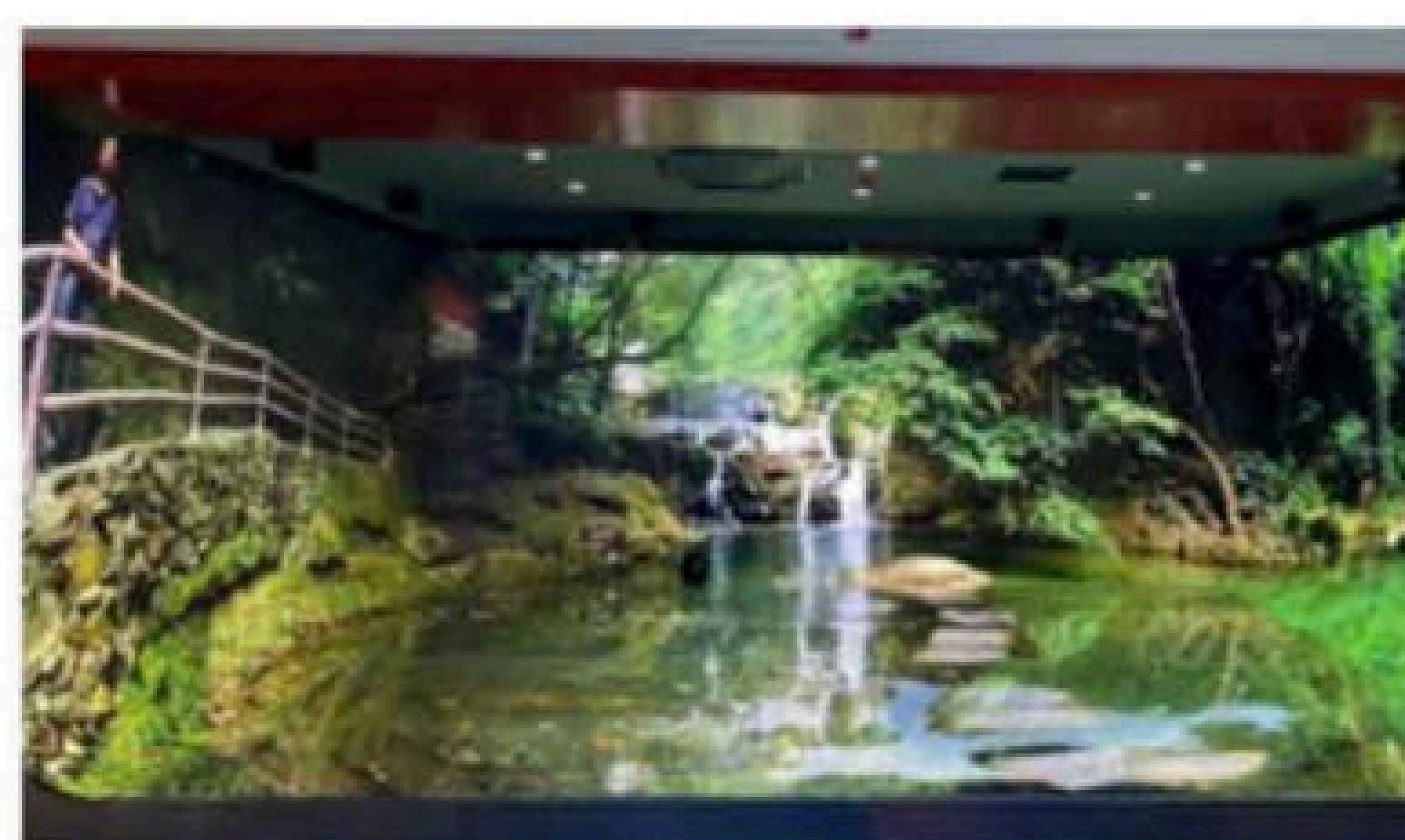
Four sided curved canopy CAVE



Curved CAVE with four sided ground curtains



Five sided curved CAVE

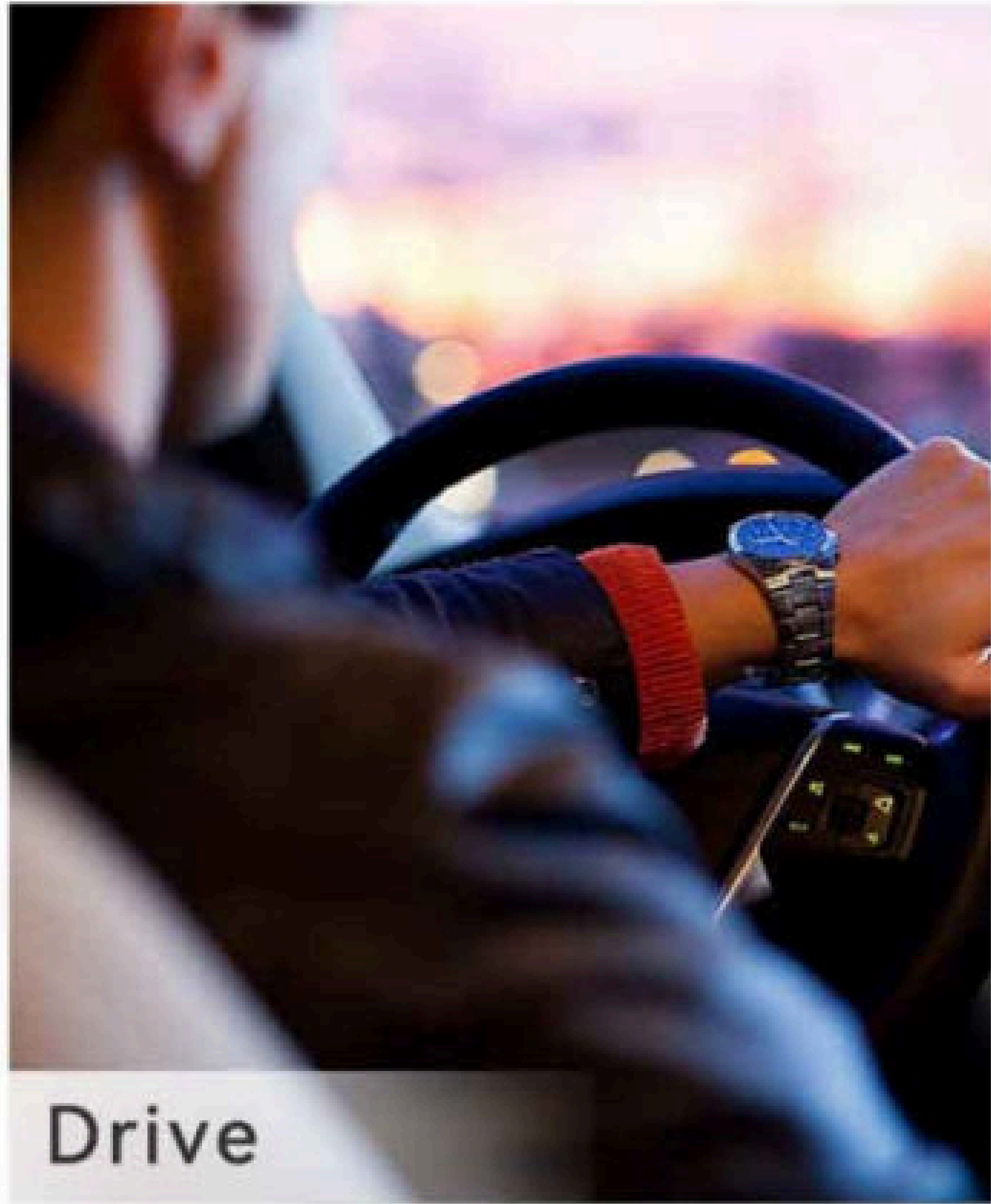


CAVE Immersive X-Flexible Solution

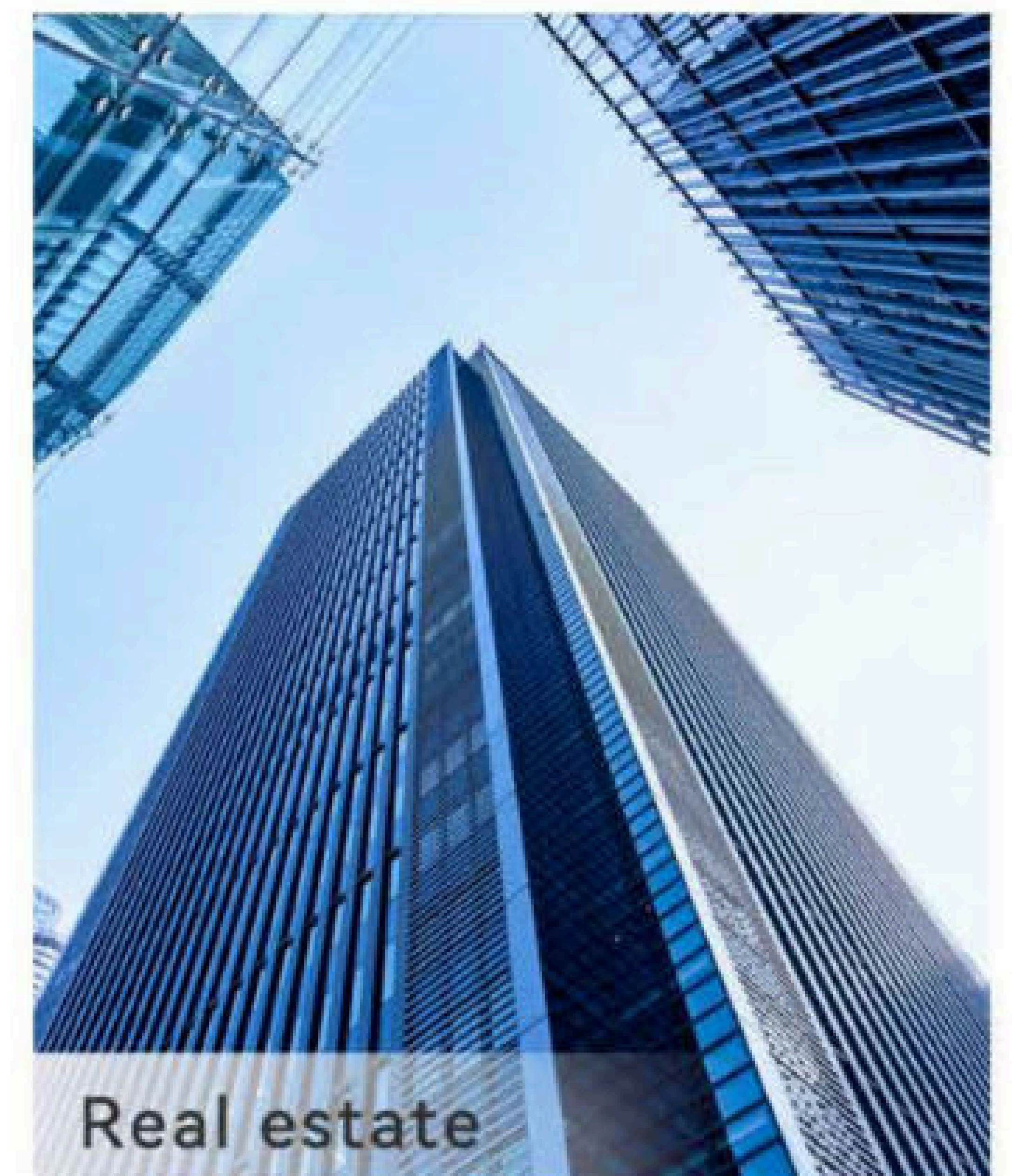
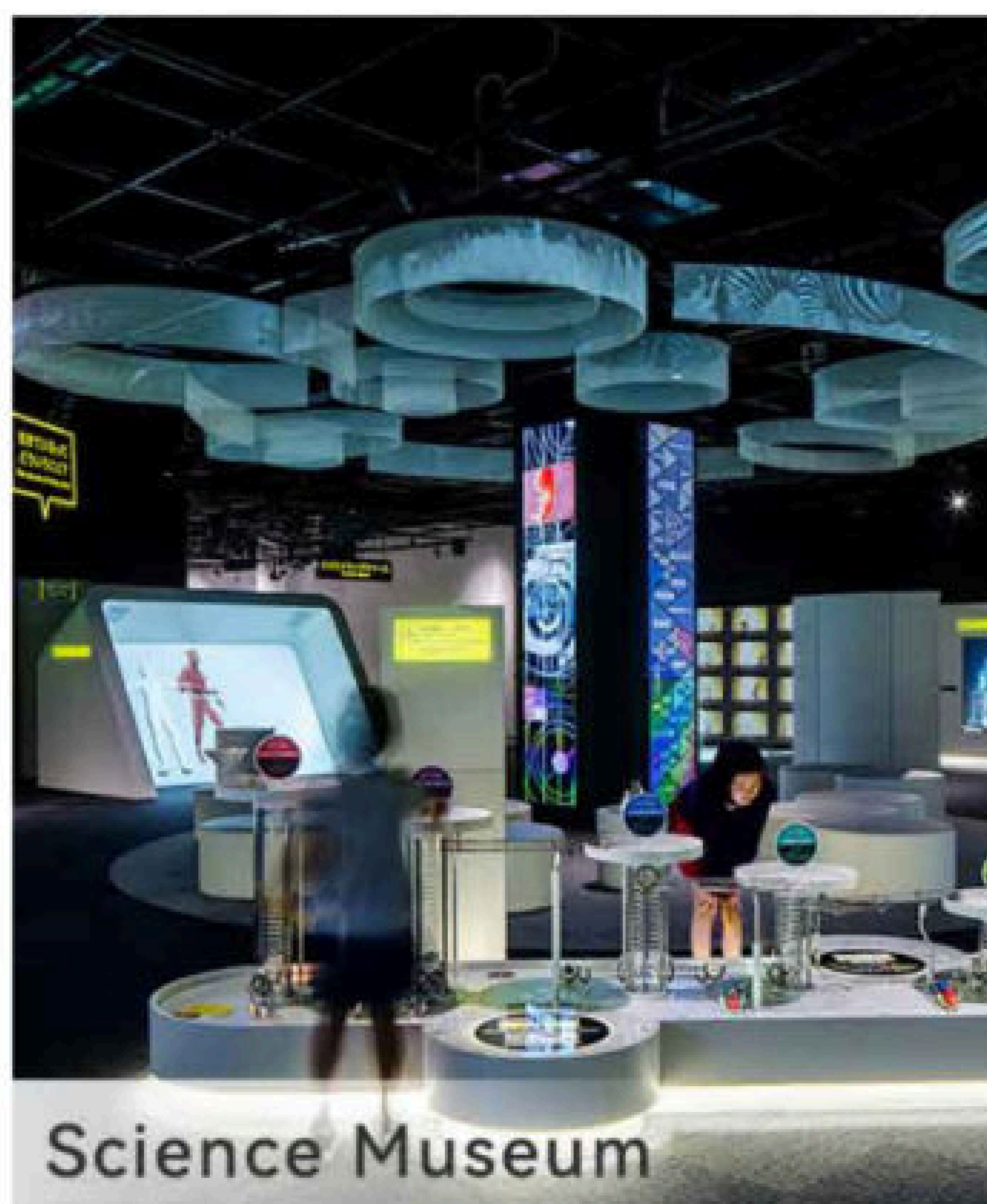


APPLICATION AREA

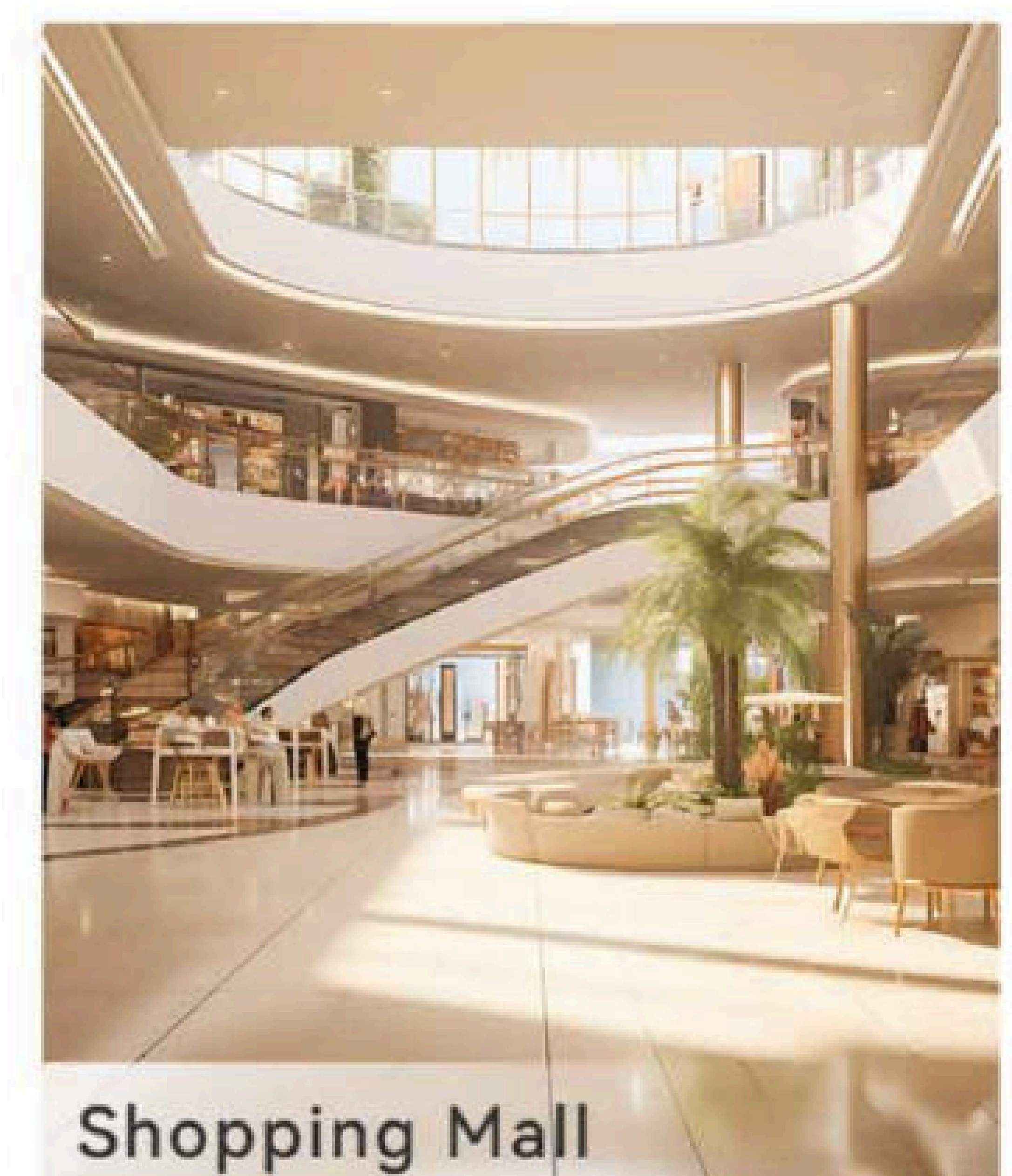
Popular science education



Exhibition Gallery



Travel Entertainment

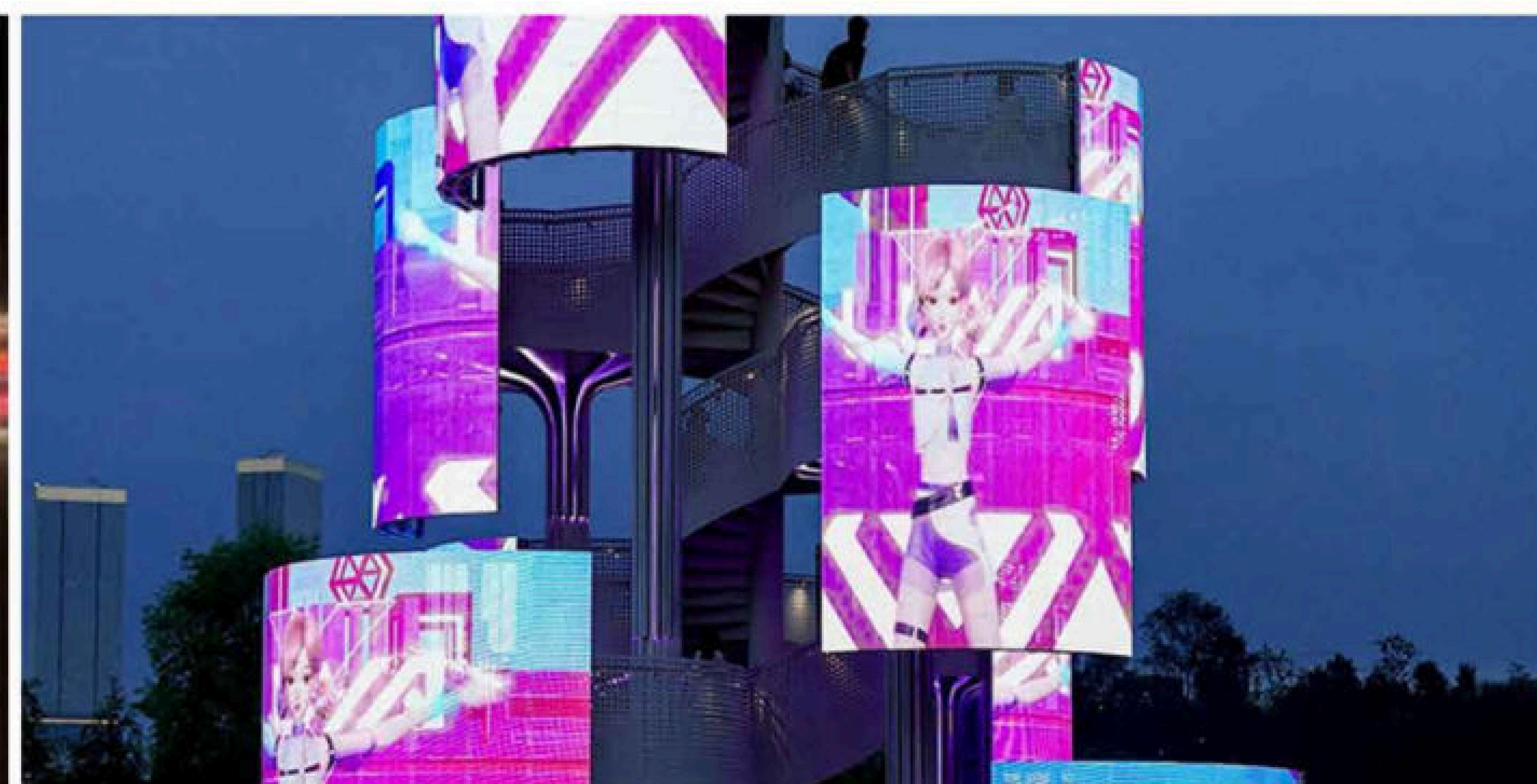
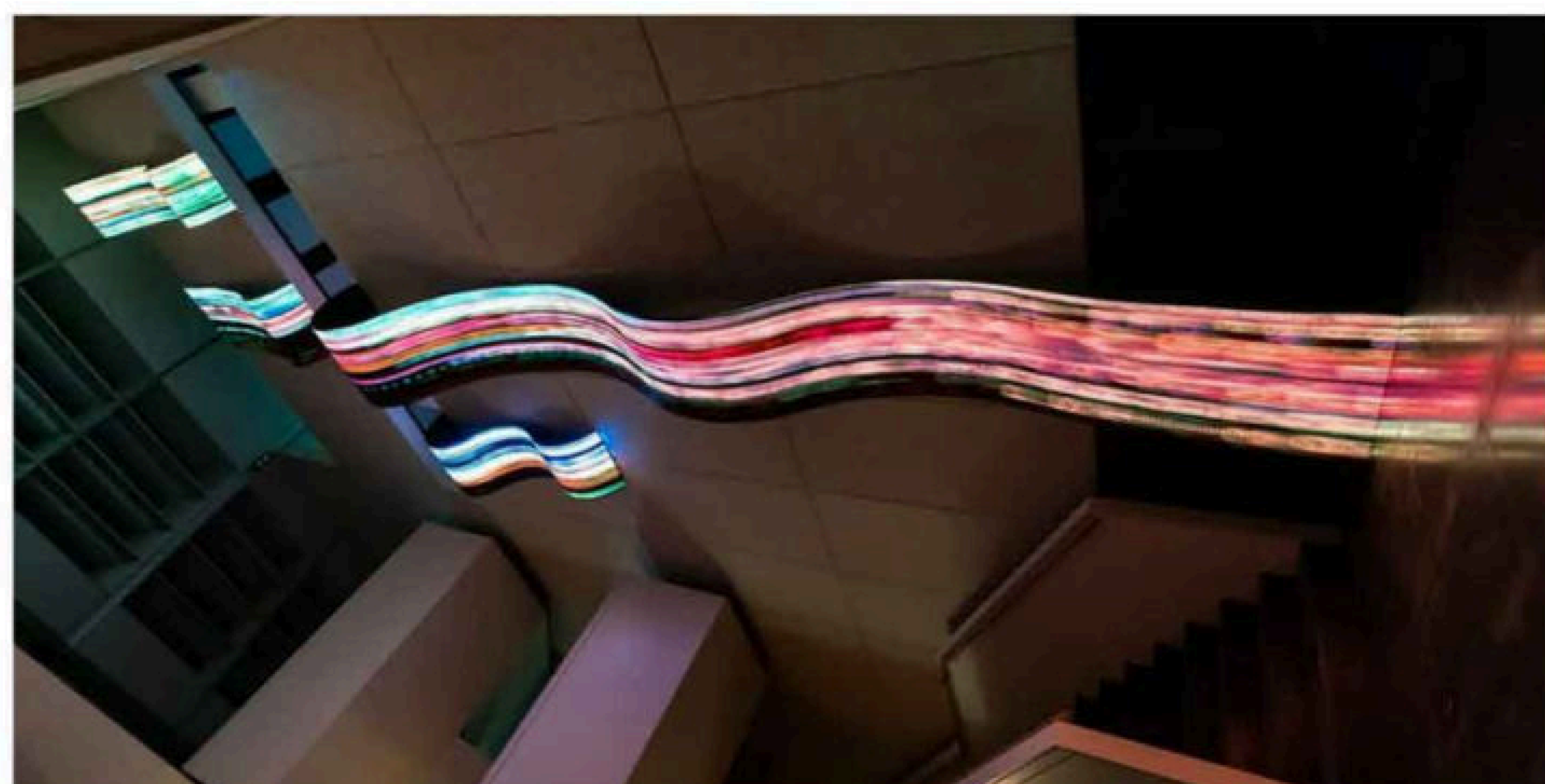


TRADITIONAL INDOOR FLEXIBLE SPECIFICATIONS

Module Size (mm)	Pixel Pitch (mm)	LED Lamp	Scan Mode	Module Resolution (dot)	Weight (g)	Input Voltage (V)	Max Current (A)	Brightness (Nits)	Environment
320*160 Series	1.25	TOP1010	1/64S	256*128	330	5	5	600CD	Indoor
	1.538	SMD1212	1/52s	208*104	340	5	4.5	600CD	Indoor
	1.86	SMD1515	1/43S	172*86	340	5	4.4	650CD	Indoor
	2	SMD1515	1/40S	160*80	340	5	4.6	700CD	Indoor
	2.5	SMD1515	1/32S	128*64	290	5	4.2	750CD	Indoor
	3.076	SMD1515	1/26S	104*52	290	5	4.2	750CD	Indoor
	4	SMD2020	1/20S	80*40	280	5	3.6	600CD	Indoor
240*120 Series	0.9375	SMD4in1	1/64S	256*128	220g	R:2.8GB:3.8	3.8	550CD	Indoor
	1.25	SMD1010	1/48S	192*96	220g	5	3.2	650CD	Indoor
	1.579	SMD1010/1212	1/38S	152*76	210g	5	2.8	650-700CD	Indoor
	1.667	SMD1010/1212	1/36S	144*72	200g	5	2.8	650-700CD	Indoor
	1.875	SMD1515	1/32S	128*64	217g	5	2.8	750CD	Indoor
	2	SMD1515	1/30S	120*60	210g	5	2.8	750CD	Indoor
	2.5	SMD1515	1/24S	96*48	190g	5	2.6	750CD	Indoor
	3	SMD2121	1/20S	80*40	175g	5	2.5	900CD	Indoor
	4	SMD2121	1/15S	60*30	175g	5	2.6	850CD	Indoor

TRADITIONAL OUTDOOR FLEXIBLE SPECIFICATIONS

Module Size (mm)	Pixel Pitch (mm)	LED Lamp	Scan Mode	Module Resolution (dot)	Weight (g)	Input Voltage (V)	Max Current (A)	Brightness (Nits)	Environment
320*160	2.5	SMD1415	1/16S	128*64	580	5	7	5000CD	Outdoor
320*160	3	SMD1415	1/13S	104*52	610	5	6	5000CD	Outdoor
320*160	4	SMD1921	1/10S	80*40	600	5	6	5000CD	Outdoor





✉ info@xiv-tec.com

📍 Building 4A-303, Huiye Hi-Tech Industry Park,
Fenghuang Str. Guangming District, Shenzhen, China

CE  RoHS  us