



Soft Connection
Rental LED Display Solutions
RS Series

P1.95 | P2.604 | P2.976 | P3.9

The cabinet is uniquely designed for better use



Light weight



High brightness

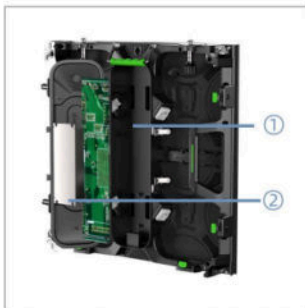


Easy maintenance

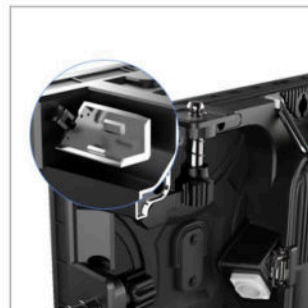


Half panel

- The cabinet is lighter and easier to install on-site
- Real pixels, refreshed at 7680 Hz, the screen is clear and crisp
- Maintenance in front of the module and maintenance rear the entire cabinet to facilitate on-site maintenance
- Two different sizes of cabinets provide more combination options on-site



Cabinet assembly:
①HUB+②Power Supply



Corner Protector

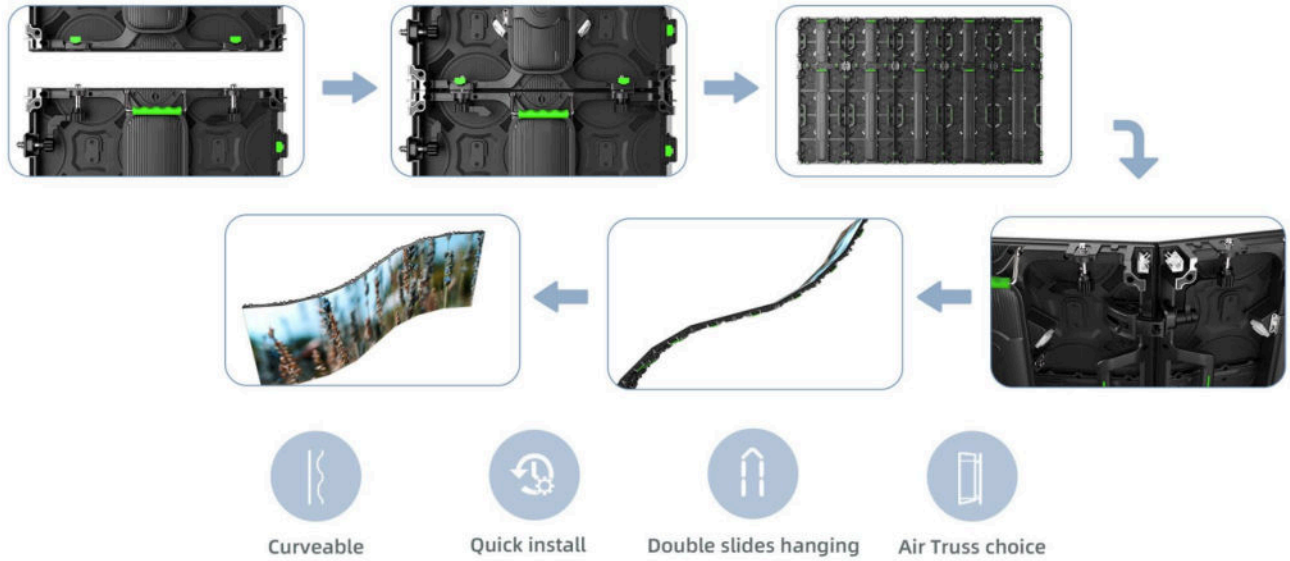


Module Magnetic



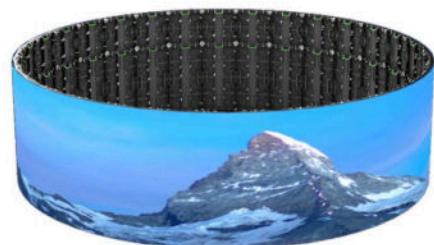
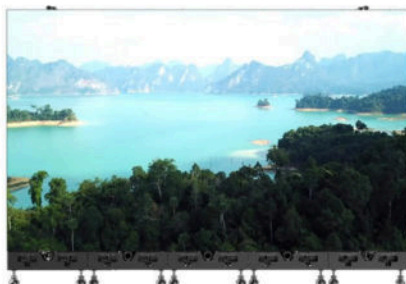
Aluminum Handle Bar

The installation method is simpler and convenient

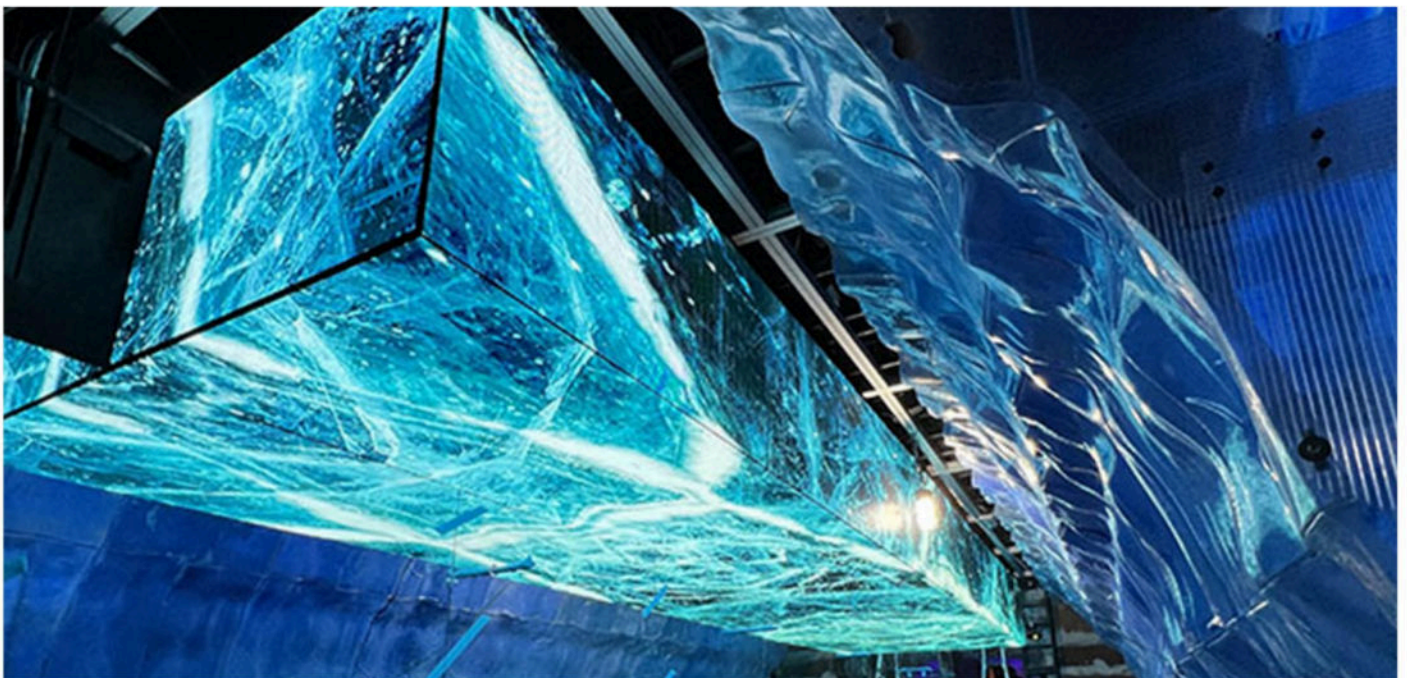
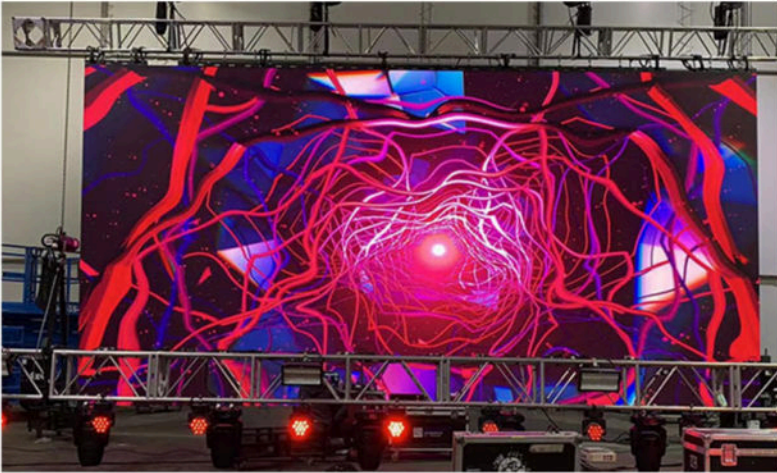


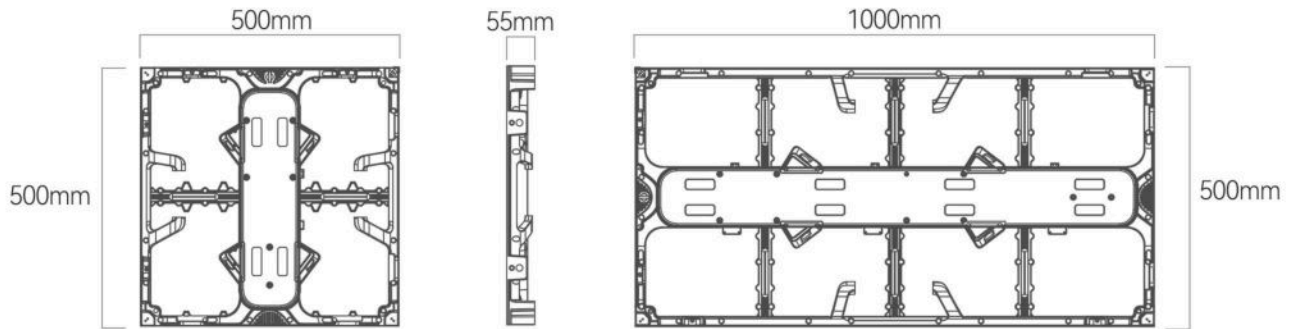
- The cabinet has ± 15 degrees curved lock design, can elevate the display effect to a higher level.
- Quick lock design improves on-site work efficiency and saves more costs.
- Various installation methods, hanging or stacking, etc.

Various installation shapes to meet various usage scenarios



Appreciation of classic cases





Pixel pitch	1.95mm	2.604mm	2.976mm	3.9mm
Pixels per cabinet(500*500mm)	256×256 (HxV)	192×192 (HxV)	168×168 (HxV)	128×128 (HxV)
Pixels per cabinet(500*1000mm)	256×512 (HxV)	192×384 (HxV)	168×336 (HxV)	128×256 (HxV)
LED lifetime	100,000h			
Brightness	Indoor: 600-800nits /Outdoor:3000-5000nits			
Module size	250*250mm			
Module resolution	128*128dots	96*96dots	84*84dots	64*64dots
Refresh rate	3840-7,680Hz			
Hor. viewing angle	140° +/-5° (@50% brightness)			
Vert. viewing angle	140° +/-5° (@50% brightness)			
Brightness uniformity	>98%			
Dimming	0-100%			
Grey Level	14-16bit			
Curvature	±15°			
Avg Power consumption	200 W/m ²	200 W/m ²	225 W/m ²	225 W/m ²
Max Power consumption	400 W/m ²	400 W/m ²	450 W/m ²	450 W/m ²
Operation power voltage	100-240V/50-60Hz			
Operational temperature	-10°C to +40°C/14°F to 104°F			
Operational humidity	10-80%			
IP rating	IP50 for indoor, IP65 for outdoor			
Dimensions	500 x 500 x 80 mm/500 x 1000 x 80 mm (WxHxD)			
Weight	7.25kg (500 x 500mm cabinet)/12.5kg (500 x 1000 mm cabinet)			
Serviceability	Rear			



✉ info@xiv-tec.com

📍 Building 4A-303, Huiye Hi-Tech Industry Park,
Fenghuang Str. Guangming District, Shenzhen, China

CE  RoHS  US